



**RESOURCE
MANAGEMENT AGENCY
COUNTY OF TULARE
AGENDA ITEM**

BOARD OF SUPERVISORS

KUYLER CROCKER
District One

PETE VANDER POEL
District Two

AMY SHUKLIAN
District Three

J. STEVEN WORTHLEY
District Four

MIKE ENNIS
District Five

AGENDA DATE: April 18, 2017

Public Hearing Required	Yes	<input type="checkbox"/>	N/A	<input checked="" type="checkbox"/>
Scheduled Public Hearing w/Clerk	Yes	<input type="checkbox"/>	N/A	<input checked="" type="checkbox"/>
Published Notice Required	Yes	<input type="checkbox"/>	N/A	<input checked="" type="checkbox"/>
Advertised Published Notice	Yes	<input type="checkbox"/>	N/A	<input checked="" type="checkbox"/>
Meet & Confer Required	Yes	<input type="checkbox"/>	N/A	<input checked="" type="checkbox"/>
Electronic file(s) has been sent	Yes	<input checked="" type="checkbox"/>	N/A	<input type="checkbox"/>
Budget Transfer (Aud 308) attached	Yes	<input type="checkbox"/>	N/A	<input checked="" type="checkbox"/>
Personnel Resolution attached	Yes	<input type="checkbox"/>	N/A	<input checked="" type="checkbox"/>
Agreements are attached and signature line for Chairman is marked with tab(s)/flag(s)	Yes	<input checked="" type="checkbox"/>	N/A	<input type="checkbox"/>

CONTACT PERSON: Celeste Perez PHONE: (559) 624-7010

SUBJECT: Authorization to redesign the Capitol Display for Tulare County in the State Capitol building

- REQUEST(S):**
That the Board of Supervisors:
1. Establish an Ad Hoc Committee comprised of two members of the Board of Supervisors to assist the County with evaluating the redesign of the Capitol Display for Tulare County that is exhibited in the State Capitol.
 2. Appoint two members of the Board of Supervisors to serve on the Ad Hoc Capitol Display Design Committee.
 3. Provide direction to the Resource Management Agency in addressing the key components of the Capitol Display for Tulare County so it can be refurbished.

SUMMARY:
The Capitol Display for Tulare County is a glass-enclosed display case that showcases tourist attractions located within Tulare County, such as Sequoia & Kings Canyon National Parks, and the rich agricultural commodities that grow within this county. The display is located just outside the Governor of California's Conference room in a high traffic area that attracts many visitors. The large shadowbox display was last updated in December 2014 by members of the Porterville Leadership class.

One of the key features of the current display is a digital sign that scrolled through dozens of scenic views captured from throughout Tulare County. Volunteers working on the Capitol Display researched the County's outdoor recreation opportunities, Sequoia and Kings National Parks, the Sequoia National Monument, Col. Allensworth State Historic Park, the County's bountiful agriculture, arts and

SUBJECT: Authorization to redesign the Capitol Display for Tulare County in the State Capitol building
DATE: April 18, 2017

cultural attractions for inclusion in this project.

Unfortunately, the electronic display has since failed and has been inactive for some time – either due to equipment failure or an inadequate electrical supply that feeds this display. The Capitol Display was previously updated in 2008 and 1992.

County Staff is requesting the Board create an Ad Hoc Committee comprised of two current members of the Board of Supervisors to provide input and feedback on how to redesign and refurbish the Capitol Display. We propose that this Ad Hoc Committee would be staffed by Tulare County Film and Tourism staff. It is anticipated that using this feedback, staff will then work closely with the Arts Consortium to coordinate and facilitate turning the artistic vision for the display into an appropriate exhibit. Working with the Arts Consortium, staff would also conduct appropriate outreach to community stakeholders such as the Sequoia Tourism Council – a volunteer collaborative of members of local chambers of commerce, representatives from the National Parks Service and United States Forest Service, local retail community and other stakeholders with a shared interest in promoting tourism and visitor spending within Tulare County – to help identify appropriate content.

The Arts Consortium is the organization designated several years ago by the Tulare County Board of Supervisors as the official arts council for Tulare County. The Resource Management Agency partnered in Fall 2016 with the Arts Consortium to incorporate public art into the recently constructed Deer Creek Bridge. Staff plans to partner with the Arts Consortium on the refurbishment of the Capitol Display; in exchange for a stipend, the Consortium will provide technical expertise and assist in the construction of the new exhibit.

FISCAL IMPACT/FINANCING:

The Fiscal Year 2017-2018 Tulare County Tourism work plan includes a one-time increase of \$10,000 to accommodate refurbishment of the Capitol Display for Tulare County. Of this amount, staff anticipates allocating a stipend of \$2,500 to the Arts Consortium.

LINKAGE TO THE COUNTY OF TULARE STRATEGIC BUSINESS PLAN:

The Capitol Display exhibit is linked to the Tulare County Strategic Plan Quality of Life initiative because it promotes tourism opportunities and emphasizes Tulare County's cultural heritage and proximity to Sequoia & Kings Canyon National Parks, The Giant Sequoia National Monument and the High Sierra, and Col. Allensworth State Historic Park, and it enhances the cultural education of our residents and visitors to our county.

SUBJECT: Authorization to redesign the Capitol Display for Tulare County in the
State Capitol building

DATE: April 18, 2017

ADMINISTRATIVE SIGN-OFF:



Reed Schenke P.E.
Interim Director

Cc: Auditor-Controller
County Counsel
County Administrative Office (2)

Attachment A – Capitol Display Dimensions

**BEFORE THE BOARD OF SUPERVISORS
COUNTY OF TULARE, STATE OF CALIFORNIA**

IN THE MATTER OF AUTHORIZATION TO)
REDESIGN THE CAPITOL DISPLAY FOR) Resolution No. _____
TULARE COUNTY IN THE STATE CAPITOL)
BUILDING)

UPON MOTION OF SUPERVISOR _____, SECONDED BY
SUPERVISOR _____, THE FOLLOWING WAS ADOPTED BY THE BOARD
OF SUPERVISORS, AT AN OFFICIAL MEETING HELD APRIL 18, 2017, BY THE
FOLLOWING VOTE:

AYES:
NOES:
ABSTAIN:
ABSENT:

ATTEST: MICHAEL C. SPATA
COUNTY ADMINISTRATIVE OFFICER/
CLERK, BOARD OF SUPERVISORS

BY: _____
Deputy Clerk

* * * * *

1. Established an Ad Hoc Committee comprised of two members of the Board of Supervisors to assist the County with evaluating the redesign of the Capitol Display for Tulare County that is exhibited in the State Capitol.
2. Appointed two members of the Board of Supervisors to serve on the Ad Hoc Capitol Display Design Committee.
3. Provided direction to the Resource Management Agency in addressing the key components of the Capitol Display for Tulare County so it can be refurbished.

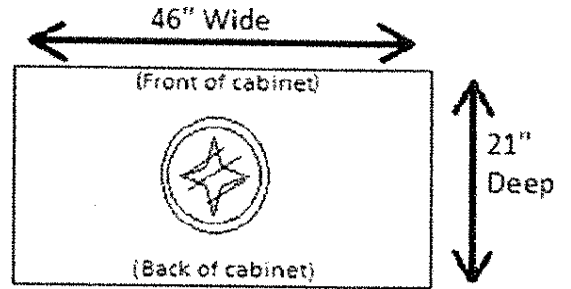
ATTACHMENT “A”

Capitol Display Dimensions

STATE CAPITOL COUNTY DISPLAY CABINET MEASUREMENTS

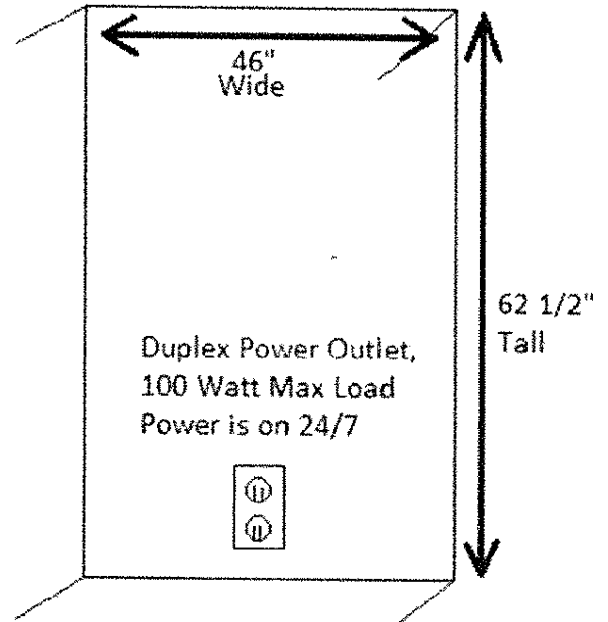


Ceiling of Cabinet

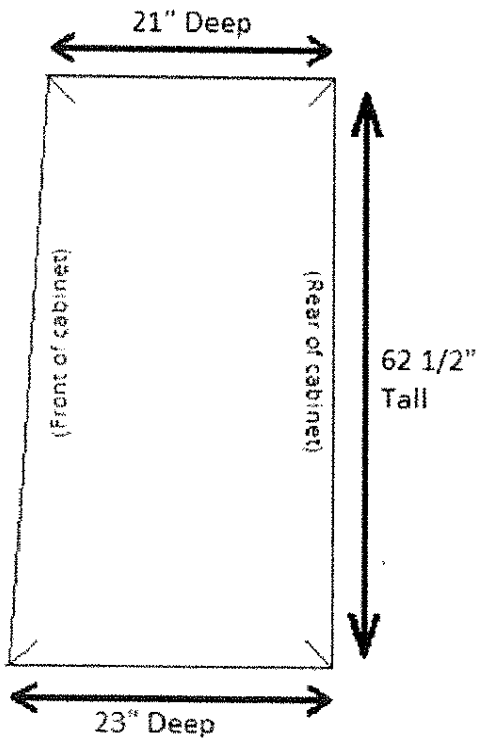


Recessed Light 8" wide
110 Volt Light

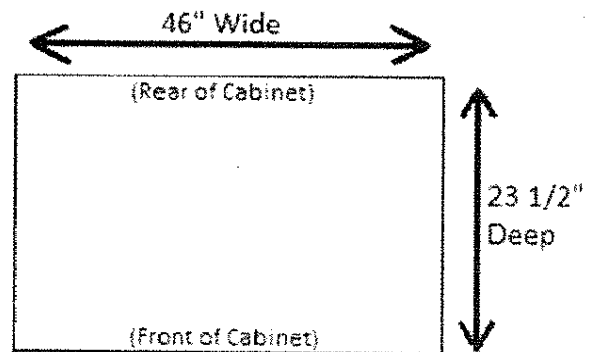
Rear Wall of Cabinet



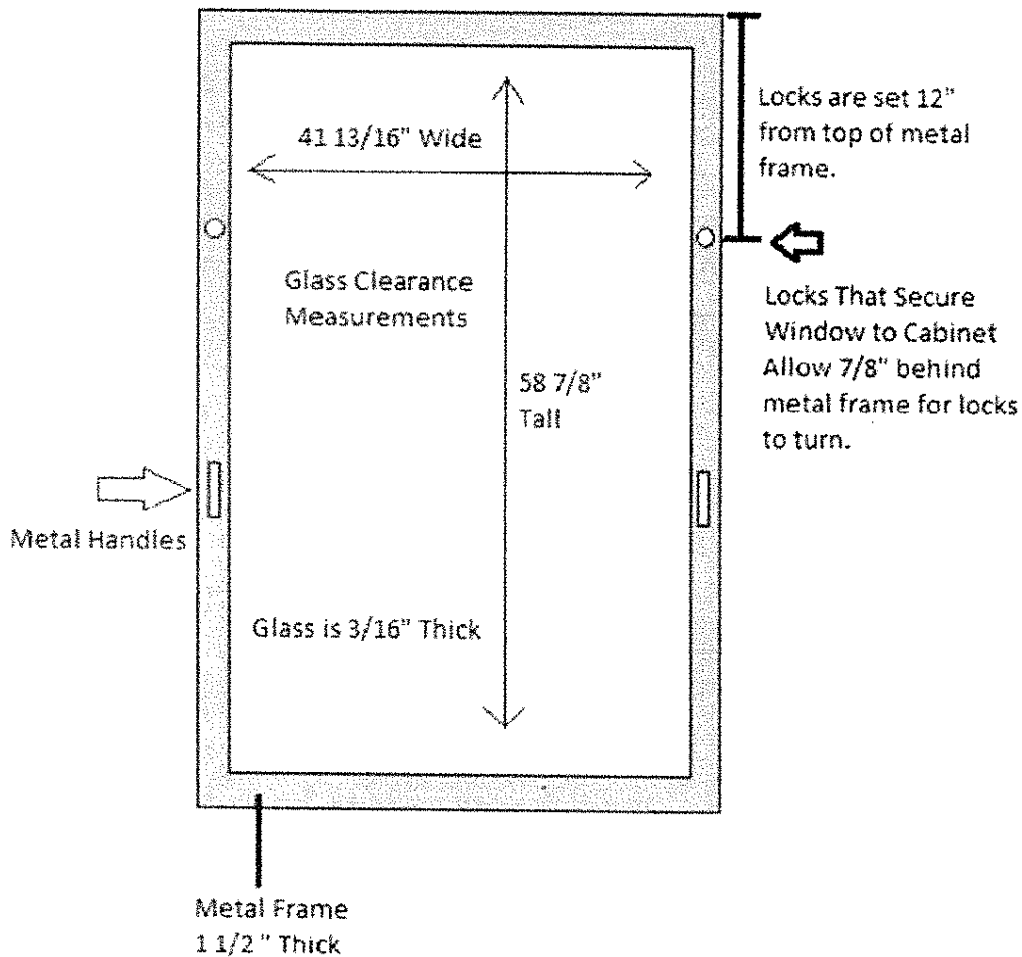
Side View of Cabinet



Bottom of Cabinet



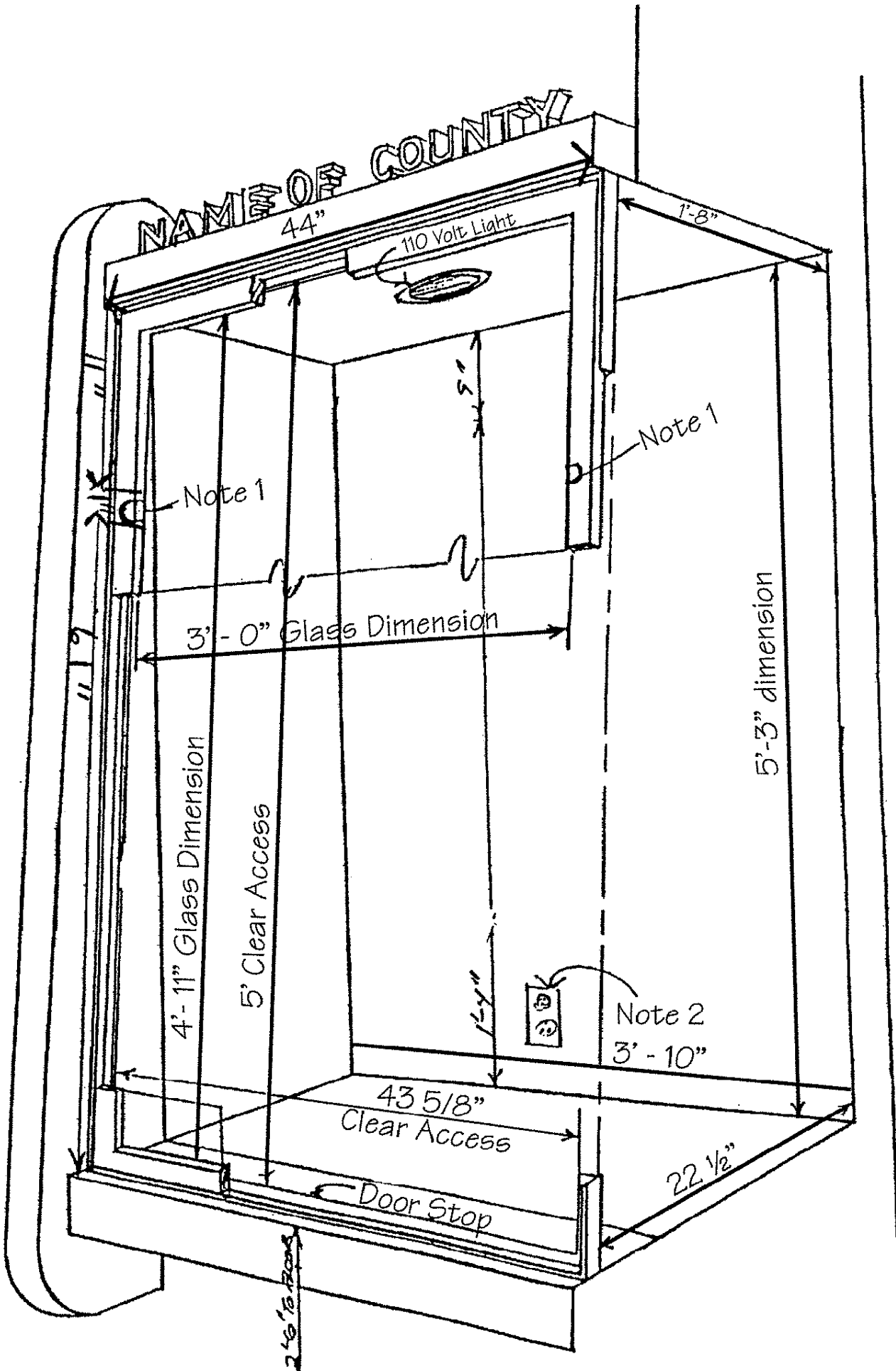
Front Glass Window/ Door



Additional Notes & Restrictions

- A few county cabinets vary in width by 1/8th – 1/16th of an inch. If you require exact measurements for cabinet width, please contact us for the specific measurement of your county.
- No blatant advertising for private businesses; if you'd like to credit a company or organization that created or assisted with the creation of your display, that is allowed.
- No permanent changes/ additions to cabinets are allowed.
- No drilling into the walls of the cabinet; walls behind cabinet are concrete. Partitions between cabinets are solid granite.
- Taping or light-duty stapling to the cabinet walls is fine, as long as they can be removed with little effort and leave minimal damage to walls.
- No painting the cabinet walls.
- Be advised, the cabinets do not have much ventilation and can get warm, especially with a lot of electronics running in them.
- DGS only maintains the one recessed can light in the cabinet. Any additional lights are the responsibility of the respective County.
- DGS is not allowed to make adjustments, repair or clean the displays, other than to maintain the electrical power outlet in the box or change the bulb in the recessed can light.
- Power to cabinets is on 24/7, barring any unforeseen electrical malfunctions.
- If you need to affix/ secure items, we suggest constructing a shell/ skeleton box to slide into the cabinet and affix the items to the shell.

If you have further questions or would like more detail/ clarification on any of this information, please call our Capitol Trades Office at (916) 445-2260.



NOTES

- Note 1- Allow for turning locks inside case
- Note 2- Duplex power outlet, 100 watt max load