



**RESOURCE
MANAGEMENT AGENCY
COUNTY OF TULARE
AGENDA ITEM**

BOARD OF SUPERVISORS

KUYLER CROCKER
District One
PETE VANDER POEL
District Two
AMY SHUKLIAN
District Three
J. STEVEN WORTHLEY
District Four
MIKE ENNIS
District Five

AGENDA DATE: April 3, 2018

Public Hearing Required	Yes	<input type="checkbox"/>	N/A	<input checked="" type="checkbox"/>
Scheduled Public Hearing w/Clerk	Yes	<input type="checkbox"/>	N/A	<input checked="" type="checkbox"/>
Published Notice Required	Yes	<input type="checkbox"/>	N/A	<input checked="" type="checkbox"/>
Advertised Published Notice	Yes	<input type="checkbox"/>	N/A	<input checked="" type="checkbox"/>
Meet & Confer Required	Yes	<input type="checkbox"/>	N/A	<input checked="" type="checkbox"/>
Electronic file(s) has been sent	Yes	<input checked="" type="checkbox"/>	N/A	<input type="checkbox"/>
Budget Transfer (Aud 308) attached	Yes	<input type="checkbox"/>	N/A	<input checked="" type="checkbox"/>
Personnel Resolution attached	Yes	<input type="checkbox"/>	N/A	<input checked="" type="checkbox"/>
Agreements are attached and signature line for Chairman is marked with tab(s)/flag(s)	Yes	<input type="checkbox"/>	N/A	<input checked="" type="checkbox"/>

CONTACT PERSON: Celeste Perez PHONE: (559) 624-7010

SUBJECT: Tulare County Maintained Mileage of 2017

REQUEST(S):

That the Board of Supervisors:

1. Approve the maintained mileage for calendar year 2017, as described in Exhibit A – Tulare County Maintained Mileage of 2017.
2. Adopt that the maintained mileage was 2,974.21 miles as of December 31, 2017.
3. Direct the Clerk of the Board of Supervisors to return to the Resource Management Agency a certified copy of the resolution be filed with the State of California Department of Transportation.

SUMMARY:

Tulare County Resource Management Agency (RMA) is responsible for maintaining streets and roads in the unincorporated region of the County of Tulare. A detailed accounting of the road system is required to be reported to the State of California each year. Amongst a number of reasons for this accounting, one is that the amount of State funding that the County receives is based partially on the amount of road miles that the County maintains. This number is considered the "Maintained Mileage".

The Tulare County Maintained Mileage is reported to the State of California Department of Transportation (Caltrans) annually, in compliance with Section 2121 of the Streets and Highways Code. The maintained mileage for calendar year 2017 as of December 31st is 2,974.25 miles. The changes (additions and exclusions) to

SUBJECT: Tulare County Maintained Mileage of 2017

DATE: April 3, 2018

the maintained mileage in calendar year 2017 are described in Attachment F, Exhibit A – Tulare County Maintained Mileage of 2017.

New for 2017, is a requirement by Caltrans that the Maintained Mileage reporting be submitted with a Geographic Information Systems (GIS) "shapefile", an electronic, geospatially calibrated map of the road network. These new requirements are a result of the federally mandated Highway Performance Monitoring System (HPMS) program.

In response to this new requirement, the RMA and the GIS unit of the Tulare County Information & Communications Technology Department collaborated to develop and prepare a GIS "shapefile", which contains geospatial data which graphically represent all road segments of the Tulare County Maintained Mileage System. This was a significant undertaking as it required substantial research into the original documents that established the roadway rights of way.

Previous year's Maintained Mileage data was calculated based on a simple addition or subtraction of maintained miles that occurred during the year and was based on a starting number that was provided by Caltrans. The new value is somewhat different from that previously calculated number, but is more accurate.

The GIS shapefile was produced using data from RMA's Pavement Management System (PMS). An adjustment was applied to the maintained mileage of 2017 to transition from the maintained mileage produced from Caltrans' data to that from PMS. The PMS will be used to determine the maintained mileage going forward, and will provide data to produce a GIS shapefile. The adjustment and all changes to the maintained mileage are shown in Exhibit A.

FISCAL IMPACT/FINANCING:

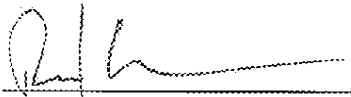
Tulare County receives a portion of funding for roadway maintenance from the State for its maintained mileage, which is apportioned based on a variety of factors including number of registered vehicles in the County and the amount of mileage that the County maintains. Modifications to the maintained mileage in these relatively small amounts will have minimal net fiscal impact to Tulare County.

LINKAGE TO THE COUNTY OF TULARE STRATEGIC BUSINESS PLAN:

Adequately maintained roadways enhance the safety and security of the public transportation infrastructure for both the general population in the region and motorists using County roads. Properly reporting the Maintained Mileage is an annual requirement to receive State funding for roadway maintenance.

SUBJECT: Tulare County Maintained Mileage of 2017
DATE: April 3, 2018

ADMINISTRATIVE SIGN-OFF:



Reed Schenke P.E.
Director

Cc: Auditor-Controller
County Counsel
County Administrative Office (2)

Attachments: Attachment A – Vicinity Map
Attachment B – Location Map, Vacation of Azalea Avenue
Attachment C – Location Map, Annexation 1527-D-61, Dinuba
Attachment D – Location Map, Annexation 1528-F-319, Porterville
Attachment E – Location Map, Annexation 1533-V-450, Visalia
Attachment F – Exhibit A – Tulare County Maintained Mileage of 2017

**BEFORE THE BOARD OF SUPERVISORS
COUNTY OF TULARE, STATE OF CALIFORNIA**

IN THE MATTER OF TULARE COUNTY) Resolution No. _
MAINTAINED MILEAGE OF 2017)

UPON MOTION OF SUPERVISOR _____, SECONDED BY
SUPERVISOR _____, THE FOLLOWING WAS ADOPTED BY THE BOARD
OF SUPERVISORS, AT AN OFFICIAL MEETING HELD APRIL 3, 2018, BY THE
FOLLOWING VOTE:

AYES:
NOES:
ABSTAIN:
ABSENT:

ATTEST: MICHAEL C. SPATA
COUNTY ADMINISTRATIVE OFFICER/
CLERK, BOARD OF SUPERVISORS

BY: _____
Deputy Clerk

* * * * *

1. Approved the maintained mileage for calendar year 2017, as described in Exhibit A – Tulare County Maintained Mileage of 2017.
2. Adopted that the maintained mileage was 2,974.21 miles as of December 31, 2017.
3. Directed the Clerk of the Board of Supervisors to return to the Resource Management Agency a certified copy of the resolution be filed with the State of California Department of Transportation.

**Exhibit A
Tulare County Maintained Mileage of 2017**

For the calendar year 2017, the additions and exclusions to maintained mileage are as follows:

1. The Tulare County Board of Supervisors approved, by Resolution No. 2017-1005, the vacation of a portion excess right of way of Azalea Avenue in the unincorporated community of Ivanhoe, between Manzanita Road and Road 159, which became effective by recordation of said Resolution per Document No. 2017-0078772, Tulare County Records. The vacation excluded **0.03 miles** of maintained mileage of a portion of Azalea Avenue. See Attachment B – Location Map, Vacation of Azalea Avenue.

2. The Tulare County Local Agency Formation Commission (LAFCo) approved Annexation 1527-D-61 in the City of Dinuba, by Resolution No. 17-001, which became effective by the recordation of the Certificate of Completion per Document No. 2017-0020110, Tulare County Records. The annexation excluded **0.13 miles** of maintained mileage of a portion of Avenue 412 (Sierra Way), east of Randle Road. See Attachment C – Location Map, Annexation 1527-D-61, Dinuba.

3. LAFCo approved Annexation 1528-P-319 in the City of Porterville, by Resolution No. 17-004, which became effective by the recordation of the Certificate of Completion per Document No. 2017-0023002, Tulare County Records. The annexation excluded **2.28 miles** of maintained mileage as follows:

ROAD NAME	ROAD NUMBER	LIMITS	MILEAGE
Slaughter Avenue	LA151A	Lotas Street to Beverly Street	0.13
Slaughter Avenue	A151	Beverly to D235A Slaughter	0.15
Slaughter Avenue	D235A	A151 Slaughter to Roby	0.10
Clare Avenue	LA150A	Newcomb to Beverly	0.24
Roby Avenue	LA150B	Newcomb to SH 65	0.74
Lotas Street	R233	150' N/O Clare to 150' S/O Roby	0.12
Atkins Steef	LR234B	150' S/O Olive to A151 Slaughter	0.10
Waukesha Street	LR235G	A151 Slaughter to end	0.06
Lucy Street	R235	A151 Slaughter to Roby	0.09
Prospect Street	R236	Roby to 150' S/O Olive	0.17
Maston Street	LR236B	Roby to 150' S/O Olive	0.17
Cobb	LR237A	215' S/O Roby to 150' S/O Olive	0.21
Total Mileage Excluded			2.28

See Attachment D – Location Map, Annexation 1528-P-319, Porterville.

4. LAFCo approved Annexation 1533-V-450 in the City of Visalia, by Resolution No. 17-014, which became effective by the recordation of the Certificate of Completion per Document No. 2017-0064400, Tulare County Records. The annexation excluded **0.19 miles** of maintained mileage of a portion of Roeben Drive south of West Noble Avenue. See Attachment E – Location Map, Annexation 1533-V-450, Visalia.

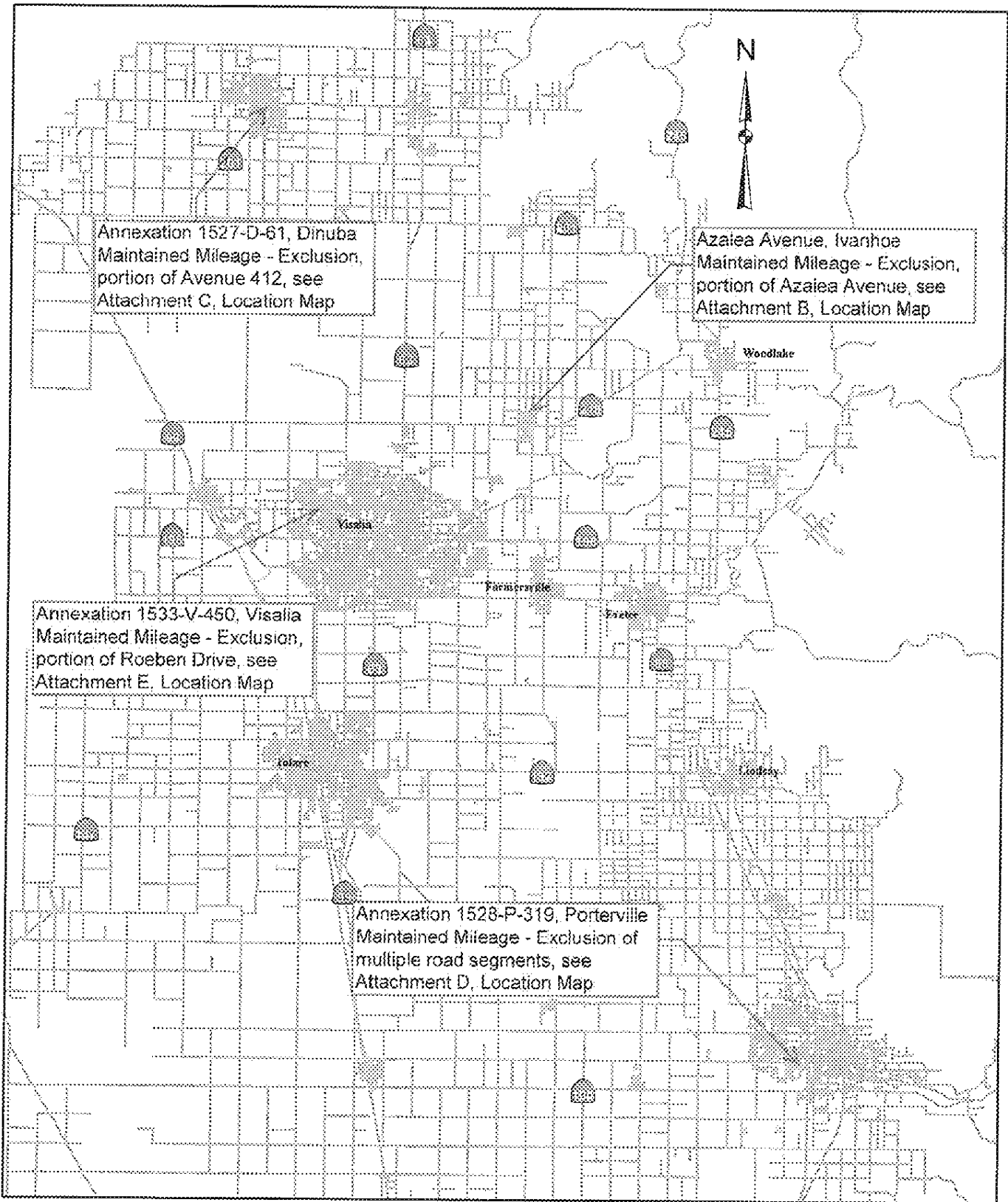
The total of the above changes (exclusions) to the maintained mileage is **-2.63** miles.

The adjustment applied to the maintain mileage to transition to the Pavement Management System is **-54.20** miles.

The Tulare County Maintained Mileage of 2016 adopted by the Board of Supervisors by Resolution 2017-0302 was **3031.08** miles.

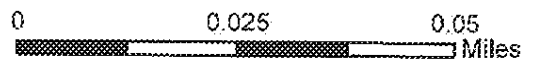
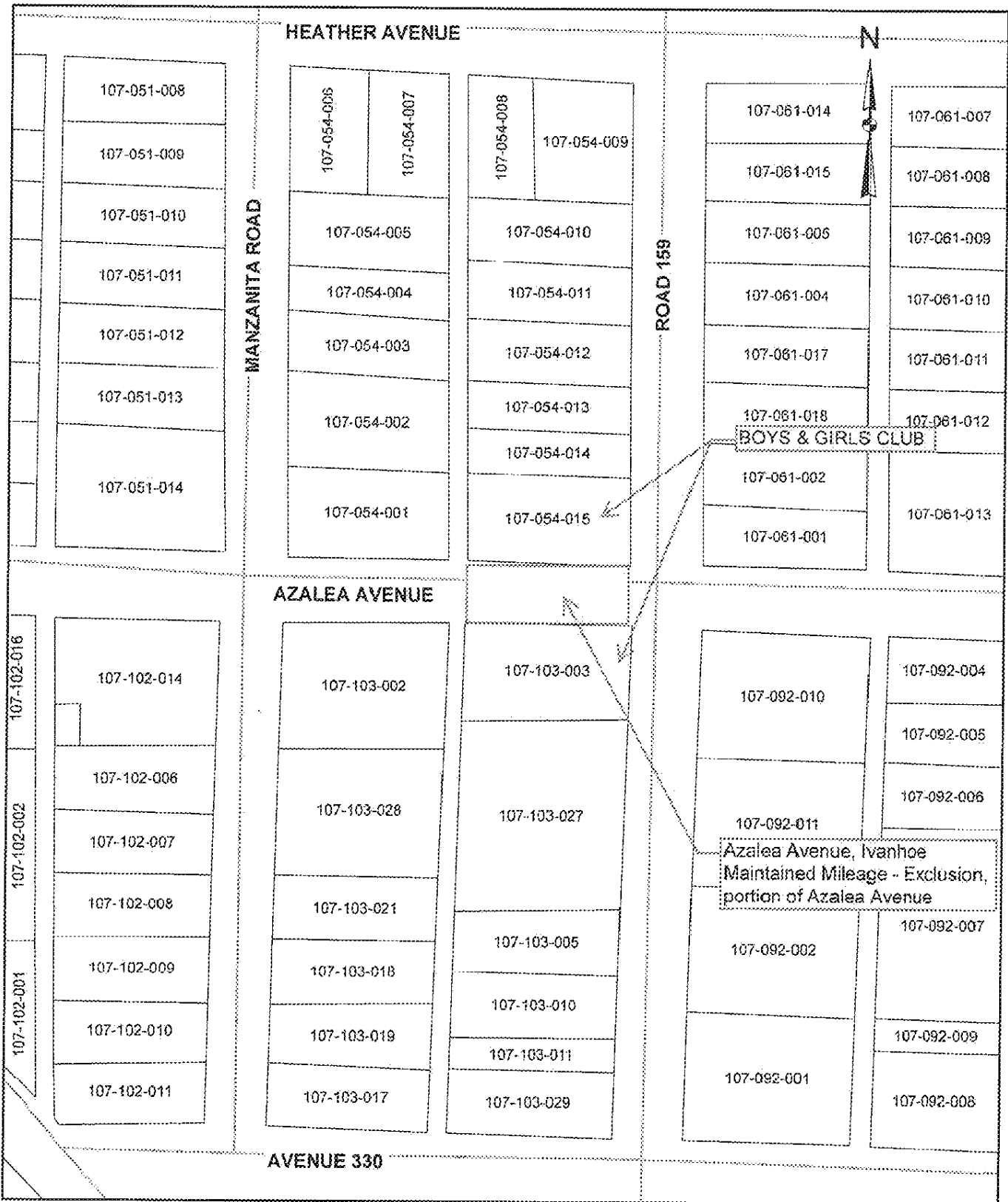
The Tulare County Maintained Mileage of 2017, as of December 31, 2017, was **2974.25** miles.

Attachment A - Vicinity Map

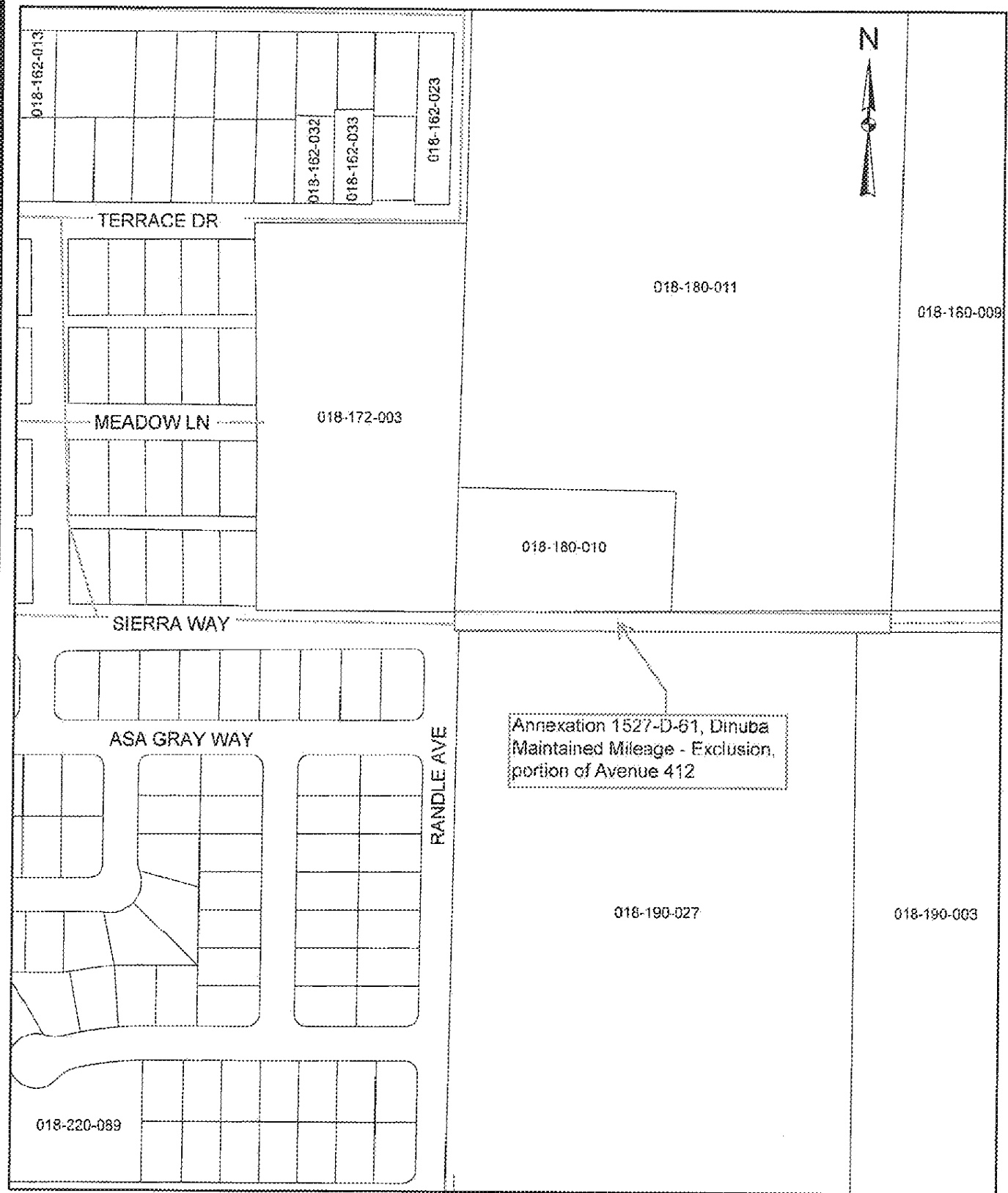


0 1 2 4 6 8 10 Miles

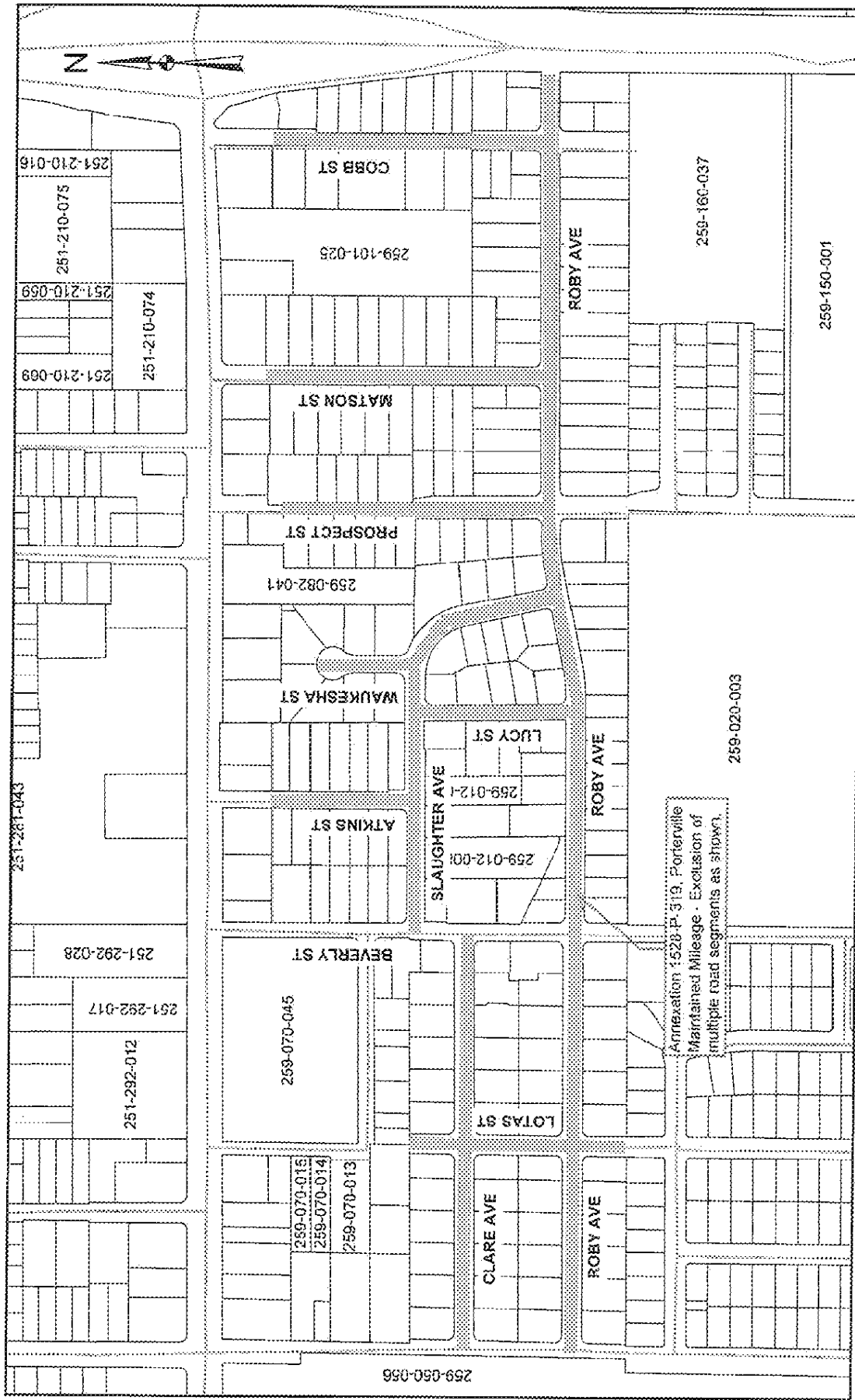
Attachment B - Location Map, Vacation of Azalea Avenue, Ivanhoe



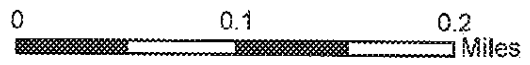
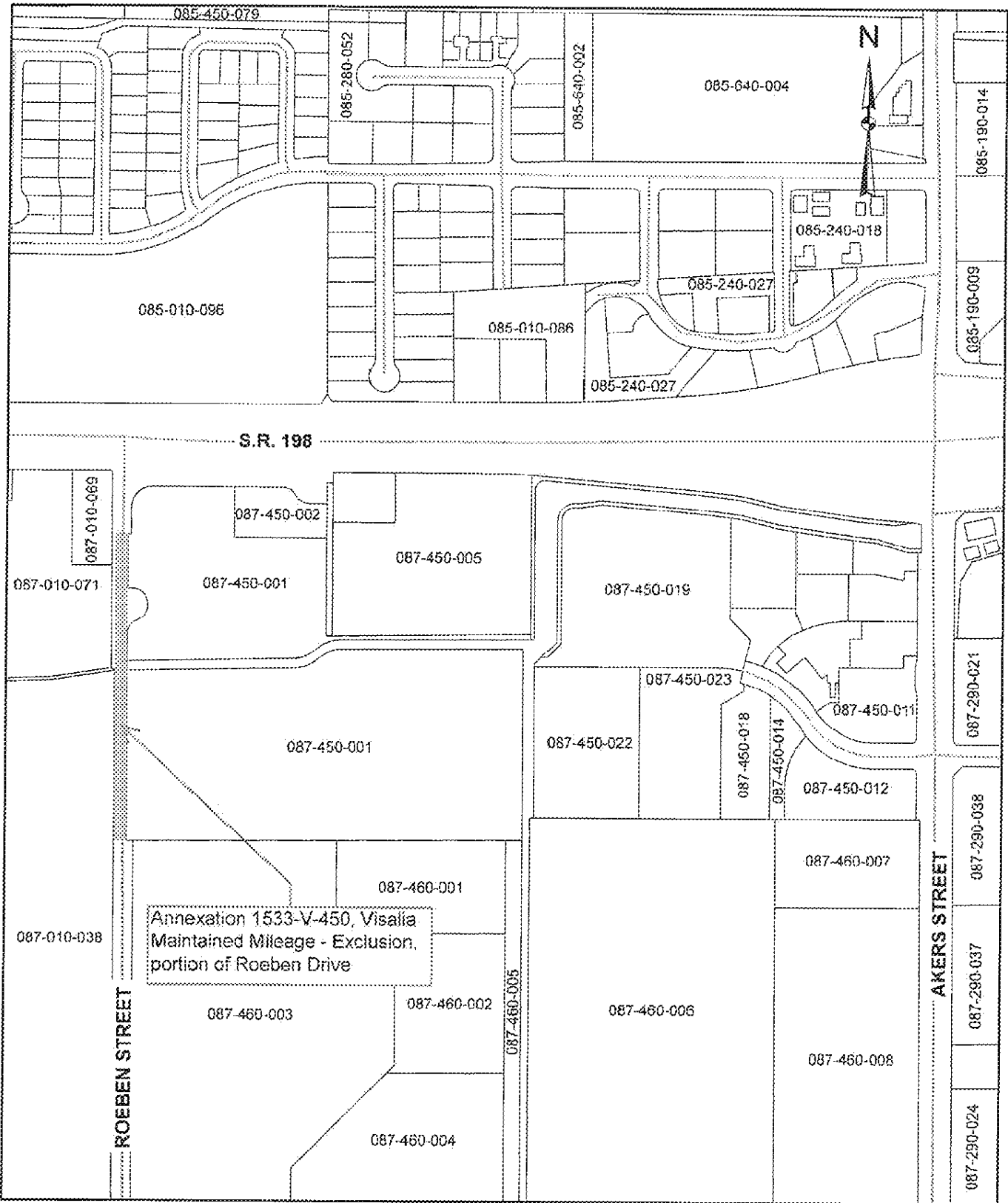
Attachment C - Location Map, Annexation 1527-D-61, Dinuba



Attachment D - Location Map, Annexation 1528-P-319, Porterville



Attachment E - Location Map, Annexation 1533-V-450, Visalia



Attachment F

Exhibit A – Tulare County Maintained Mileage of 2017

Exhibit A
Tulare County Maintained Mileage of 2017

For the calendar year 2017, the additions and exclusions to maintained mileage are as follows:

1. The Tulare County Board of Supervisors approved, by Resolution No. 2017-1005, the vacation of a portion excess right of way of Azalea Avenue in the unincorporated community of Ivanhoe, between Manzanita Road and Road 159, which became effective by recordation of said Resolution per Document No. 2017-0078772, Tulare County Records. The vacation excluded **0.03 miles** of maintained mileage of a portion of Azalea Avenue. See Attachment B – Location Map, Vacation of Azalea Avenue.

2. The Tulare County Local Agency Formation Commission (LAFCo) approved Annexation 1527-D-61 in the City of Dinuba, by Resolution No. 17-001, which became effective by the recordation of the Certificate of Completion per Document No. 2017-0020110, Tulare County Records. The annexation excluded **0.13 miles** of maintained mileage of a portion of Avenue 412 (Sierra Way), east of Randle Road. See Attachment C – Location Map, Annexation 1527-D-61, Dinuba.

3. LAFCo approved Annexation 1528-P-319 in the City of Porterville, by Resolution No. 17-004, which became effective by the recordation of the Certificate of Completion per Document No. 2017-0023002, Tulare County Records. The annexation excluded **2.28 miles** of maintained mileage as follows:

ROAD NAME	ROAD NUMBER	LIMITS	MILEAGE
Slaughter Avenue	LA151A	Lotas Street to Beverly Street	0.13
Slaughter Avenue	A151	Beverly to D235A Slaughter	0.15
Slaughter Avenue	D235A	A151 Slaughter to Roby	0.10
Clare Avenue	LA150A	Newcomb to Beverly	0.24
Roby Avenue	LA150B	Newcomb to SH 65	0.74
Lotas Street	R233	150' N/O Clare to 150' S/O Roby	0.12
Atkins Street	LR234B	150' S/O Olive to A151 Slaughter	0.10
Waukesha Street	LR235G	A151 Slaughter to end	0.06
Lucy Street	R235	A151 Slaughter to Roby	0.09
Prospect Street	R236	Roby to 150' S/O Olive	0.17
Maston Street	LR236B	Roby to 150' S/O Olive	0.17
Cobb	LR237A	215' S/O Roby to 150' S/O Olive	0.21
Total Mileage Excluded			2.28

See Attachment D – Location Map, Annexation 1528-P-319, Porterville.

4. LAFCo approved Annexation 1533-V-450 in the City of Visalia, by Resolution No. 17-014, which became effective by the recordation of the Certificate of Completion per Document No. 2017-0064400, Tulare County Records. The annexation excluded **0.19 miles** of maintained mileage of a portion of Roeben Drive south of West Noble Avenue. See Attachment E – Location Map, Annexation 1533-V-450, Visalia.

The total of the above changes (exclusions) to the maintained mileage is **-2.63 miles**.

The adjustment applied to the maintain mileage to transition to the Pavement Management System is **-54.20 miles**.

The Tulare County Maintained Mileage of 2016 adopted by the Board of Supervisors by Resolution 2017-0302 was **3031.08 miles**.

The Tulare County Maintained Mileage of 2017, as of December 31, 2017, was **2974.25 miles**.