



**County Fire Department
COUNTY OF TULARE
AGENDA ITEM**

BOARD OF SUPERVISORS

KUYLER CROCKER
District One

PETE VANDER POEL
District Two

AMY SHUKLIAN
District Three

J. STEVEN WORTHLEY
District Four

MIKE ENNIS
District Five

AGENDA DATE: June 5, 2018 - REVISED

Public Hearing Required	Yes <input type="checkbox"/>	N/A <input checked="" type="checkbox"/>
Scheduled Public Hearing w/Clerk	Yes <input type="checkbox"/>	N/A <input checked="" type="checkbox"/>
Published Notice Required	Yes <input type="checkbox"/>	N/A <input checked="" type="checkbox"/>
Advertised Published Notice	Yes <input type="checkbox"/>	N/A <input checked="" type="checkbox"/>
Meet & Confer Required	Yes <input type="checkbox"/>	N/A <input checked="" type="checkbox"/>
Electronic file(s) has been sent	Yes <input checked="" type="checkbox"/>	N/A <input type="checkbox"/>
Budget Transfer (Aud 308) attached	Yes <input type="checkbox"/>	N/A <input checked="" type="checkbox"/>
Personnel Resolution attached	Yes <input type="checkbox"/>	N/A <input checked="" type="checkbox"/>
Agreements are attached and signature line for Chairman is marked with tab(s)/flag(s)	Yes <input type="checkbox"/>	N/A <input checked="" type="checkbox"/>
CONTACT PERSON: Charlie Norman		PHONE: 559-802-9800

SUBJECT: Authorize the submission of five Fire Prevention Program Grant Applications to CalFIRE. Receive an update on tree mortality activities

- REQUEST(S):**
That the Board of Supervisors:
1. Authorize the submission of five grant applications to the Fire Prevention Program for California Climate Investment Forestry Health Grants to provide fuel reductions that result in community defense zones and hazard tree removal in the communities of South Fork, Posey, Hartland, Silver City and Camp Nelson.
 2. Find that these grant applications and proposed grant projects will meet the public purposes of: (1) preventing wildfires and the reducing the severity and the dangers created by wildfires in high tree mortality areas by fuel reduction, enlargement of defensible spaces, and the creation of fire breaks and community defense zones; (2) promoting public safety by protecting evacuation routes from areas with high tree mortality; and (3) addressing climate change by reducing emissions from wildfires.
 3. Authorize the Fire Chief, or his designee, to sign and submit the grant applications.
 4. Receive an update on tree mortality activities.

SUMMARY:

SUBJECT: Authorize the submission of five Fire Prevention Program Grant Applications to CalFIRE. Receive an update on tree mortality activities
DATE: June 5, 2018

In order to help mitigate the increased risk of wildland fires caused by tree mortality and the resultant accumulation of hazardous fuels, the Tulare County Fire Department (TCFD) proposes to request grant funding to conduct fuel reduction activities from the Department of Forestry and Fire Protection's California Climate Investment Fire Prevention Grant Program (CCI).

Severe drought conditions have led to tree mortality in our forests on an unprecedented scale -- increasing wildfire and safety risks from hazardous trees; increasing threats of erosion; damaging wildlife habitat; and, releasing tons of greenhouse gas emissions. In response, on October 30, 2015, Governor Jerry Brown issued an Emergency Declaration to protect communities from California's unprecedented tree die-off. In his declaration, the Governor called for action to address the safe removal of trees that are dead and dying due to drought and bark beetle infestation, especially in high hazard zones in California's forested communities.

Tree Mortality is increasing

CalFIRE and the United States Forest Service estimated in October 2015 that 22 million trees were dead or dying in the ten California counties identified as high hazard tree mortality counties. Of that amount, 6.8 million dead trees were located within Tulare County.

By 2016, authorities estimated the dead tree count within Tulare County had grown to more than 12.9 million.

By November 2017, Tulare County was estimated to have more than 25 million dead or dying tree mortality hazard trees, the highest rate of tree mortality in the State of California.

California Climate Investment Grants

California's 2017-2018 budget allocated up to \$195 million in funding through California Climate Investment grants for local projects and activities that address the risk of wildfire and reduce wildfire potential. Successful projects are expected to promote the long-term storage of carbon in forest trees and soils, minimize the loss of forest carbon from large intense wildfires, and further the goals of the California Global Warming Solutions Act of 2006. These funds are available to state agencies, Native American Tribes, or local governments within or adjacent to State Responsibility areas. This program is funded by Cap and Trade auction proceeds.

California Climate Investment funds are administered by CalFIRE through the Forest Health Fire Prevention program, and contribute to California's climate goals by reducing emissions from wildfires, stabilizing long-term storage of carbon in biomass, and improving carbon sequestration in California's natural and working forests.

Process, cash flow and timelines

SUBJECT: Authorize the submission of five Fire Prevention Program Grant Applications to CalFIRE. Receive an update on tree mortality activities
DATE: June 5, 2018

As the responsible agency charged with fire prevention, the TCFD will be the administrator of the proposed CCI grants. The local CalFIRE Unit must be in support of any proposed grant application to be eligible for state funding. The Tulare County CalFIRE Unit has been consulted and apprised of each proposed fuel reduction project.

CCI grants are competitive. The funder does not require a local match, but will assign additional eligibility points if a local match is provided.

Because grants are funded through a reimbursement process, it is anticipated these local fuels reduction projects will require cash flow from the General Fund. The County intends to seek regular periodic reimbursements to facilitate cash flow during project activities, and will likely only proceed with one or two projects at the same time to facilitate cash flow. Each project is projected not to exceed \$250,000. All tree removal expenses will likely be incurred no sooner than Fiscal Year 2019/20 and no later than Fiscal Year 2021/22.

Grant applications are due June 6, 2018. Funding awards will be announced in July 2018. Funding agreements will be issued by September 28, 2018. State funding agreements must be fully executed by October 19, 2018. All grant activities must be completed no later than March 15, 2022. The TCFD will bring any agreements back to the Board for execution after CalFIRE makes the award selections, and will work with RMA to bring the appropriate CEQA documentation for Board approval at that time.

Proposed Tulare County CCI-funded projects

The purpose of these grant requests is to assist the County in its effort to provide the greatest possible wildfire prevention through fuel reduction. Federal, state and local fire officials have prioritized the creation of evacuation routes from wooded areas with high tree mortality and/or firebreaks that protect inhabited structures as the foremost public safety need in times of wildland fire. Local projects are proposed for Cap and Trade funding because reducing excessive fuel helps avoid massive emissions releases generated by wildland fires.

South Fork Fuel Reduction

This project will reduce vegetation and fuel materials located within 113 acres along South Fork Drive, from the community of Three Rivers to the intersect with Lower Grouse Valley Road. Fuel reduction along South Fork Drive will increase roadside safety, as well as help secure the only evacuation route for more than 2,000 residents evacuating from fast moving wild-land fires. The overriding goal is to reduce the spread of wild-land fire from the South Fork area into the wild-land/urban interface, and vice versa. The majority of this proposed project is located in a high fire severity zone with portions of the project are located in a very high fire severity zone. The evacuation route addressed in this project is identified in the Tulare County Community Evacuation Plan as the only route of travel for inhabited structures in the area.

SUBJECT: Authorize the submission of five Fire Prevention Program Grant Applications to CalFIRE. Receive an update on tree mortality activities
DATE: June 5, 2018

Posey Fuels Reduction Project

This project will reduce vegetation and fuel materials located within 111 acres surrounding the Posey Christian Camp area of Tulare County that serves a large population of children. Fuel reduction will secure a vital evacuation route for the community and several surrounding communities, including Panorama Heights, Poso Park, Sugarloaf Village, and Sugarloaf Mountain Village. Fuel reduction from this project will increase roadside safety, as well as create a temporary area of refuge for residents unable to evacuate from fast moving wildland fires. The overriding goal of this project is to reduce the spread of wildland fire from the vegetation into the wildland/urban interface.

Hartland Fuels Reduction Project

This project will reduce vegetation and fuel materials within 167 acres surrounding the Tulare County portion of the Hartland area. Fuel reduction surrounding Hartland will secure the only ingress and egress route for the area. Fuel reduction from this project will also reduce the spread of wild-land fire from the vegetation into the wild-land/urban interface. This area consists of trails, campsites, recreational facilities and disbursed residential structures.

Silver City Fuels Reduction Project

This project will reduce vegetation and fuel materials within 175 acres surrounding the community of Silver City. In addition to increased roadside safety through fuel reduction, the defensible space will be increased for more than 2,300 at-risk households in Silver City. Fuel reduction surrounding Silver City will secure a vital evacuation route for the community. Fuel reduction will also reduce the possible spread of wildland fire into the wildland/urban interface.

Camp Nelson Fuels Reduction Project

This project will reduce vegetation and fuel materials within 425 acres surrounding the community of Camp Nelson. The reduction of available fuel surrounding Camp Nelson will secure a vital evacuation route for the community and several surrounding communities, including Alpine Village, Sequoia Crest, Cedar Slope and Ponderosa. Fuel reduction will increase roadside safety, improve the defensible space for residential structures, and reduce the risk of wildland fire spreading into the wildland/urban interface.

Labor Force:

County staff proposes to utilize a combination of several of the workforce options listed below in order to minimize net county costs and maximize fuel reduction using Climate Investment Grant funds:

Tulare County Fire Hand Crew	Extra Help workers
California Conservation Corps	Contracted: Subject to wildfire deployment
Private Contractors	Vendor process: professional service agreements
Fulltime County Workforce	Reimbursable through grant funding

SUBJECT: Authorize the submission of five Fire Prevention Program Grant Applications to CalFIRE. Receive an update on tree mortality activities
DATE: June 5, 2018

Indirect Costs	10% of the grant will be used for staff support
----------------	---

FISCAL IMPACT/FINANCING:

CCI grants have no match requirements, although extra eligibility points are awarded for local matches. Because grants are funded through a reimbursement process, it is anticipated grant administration will require cash flow from the General Fund. It is also anticipated all tree removal will be eligible for grant reimbursement. The County intends to seek regular periodic reimbursements to facilitate cash flow during project activities, and will likely only proceed with one or two projects at the same time to facilitate cash flow. Each project is projected not to exceed \$250,000. All tree removal expenses will likely be incurred no sooner than Fiscal Year 2019/20 and no later than Fiscal Year 2021/22.

LINKAGE TO THE COUNTY OF TULARE STRATEGIC BUSINESS PLAN:

The County's five-year strategic plan includes the Safety and Security initiative. This action helps provide for the safety and security of the public by reducing hazardous fuels and increasing the protection of public infrastructure in the urban wild land interface.

ADMINISTRATIVE SIGN-OFF:



Jeff McLaughlin
Fire Division Chief

Cc: Auditor-Controller
County Counsel
County Administrative Office (2)

Attachment(s):

- A: Draft California Climate Investments Forestry Health Grant Proposals
- B: South Fork Fuel Reduction Map
- C: Posey Fuels Reduction Map
- D: Hartland Fuels Reduction Project Map
- E: Silver City Fuels Reduction Project Map
- F: Camp Nelson Fuels Reduction Project Map

**BEFORE THE BOARD OF SUPERVISORS
COUNTY OF TULARE, STATE OF CALIFORNIA**

IN THE MATTER OF APPROVE THE) Resolution No. _____
SUBMISSION OF CALIFORNIA CLIMATE)
INVESTMENT GRANTS)

UPON MOTION OF SUPERVISOR _____, SECONDED BY
SUPERVISOR _____, THE FOLLOWING WAS ADOPTED BY THE
BOARD OF SUPERVISORS, AT AN OFFICIAL MEETING HELD _____
_____, BY THE FOLLOWING VOTE:

AYES:
NOES:
ABSTAIN:
ABSENT:

ATTEST: MICHAEL C. SPATA
COUNTY ADMINISTRATIVE OFFICER/
CLERK, BOARD OF SUPERVISORS

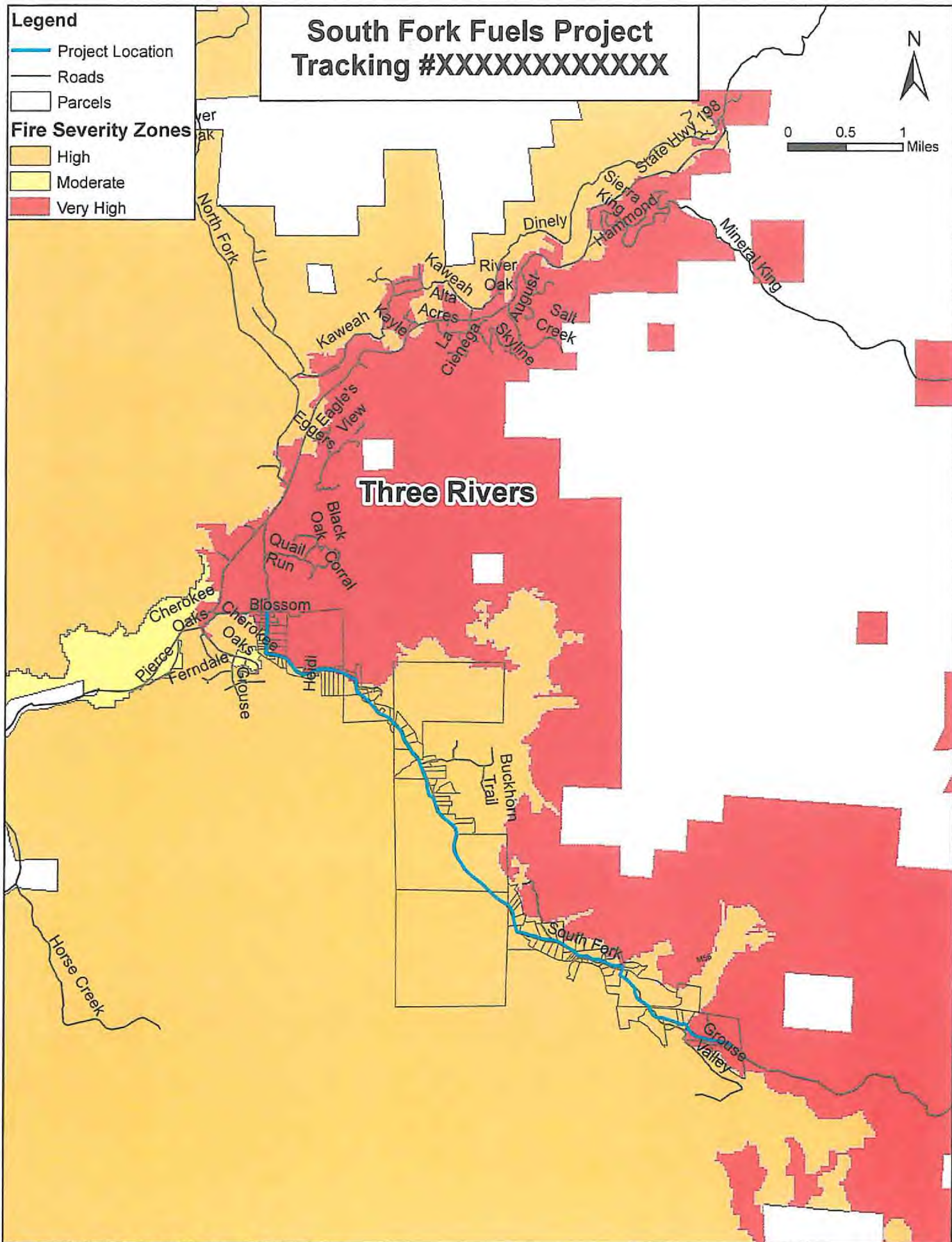
BY: _____
Deputy Clerk

* * * * *

1. Authorized the submission of five \$250,000 grants applications to the Fire Prevention Program for California Climate Investment Forestry Health Grants, for a total grant request of \$1.25 Million dollars, to provide fuel reductions that result in community defense zones and hazard tree removal in the communities of South Fork, Posey, Hartland, Silver City and Camp Nelson.
2. Found that these grant applications and proposed grant projects will meet the public purposes of: (1) preventing wildfires and the reducing the severity and the dangers created by such wildfires through high tree mortality areas by fuel reduction, enlargement of defensible spaces, and the creation of fire breaks and community defense zones; (2) promoting public safety by protecting evacuation routes from areas with high tree mortality; and (3) addressing climate change by reducing emissions from wildfires, stabilizing long-term storage of carbon in biomass, and thereby improving carbon sequestration in California's natural and working forests.
3. Authorized the Fire Chief, or his designee, to sign and submit the grant applications.
4. Received an update on tree mortality activities.

South Fork Fuels Project Tracking #XXXXXXXXXXXX

- Legend**
- Project Location
 - Roads
 - Parcels
 - Fire Severity Zones**
 - High
 - Moderate
 - Very High



Posey Fuels Project Tracking #XXXXXXXXXXXX

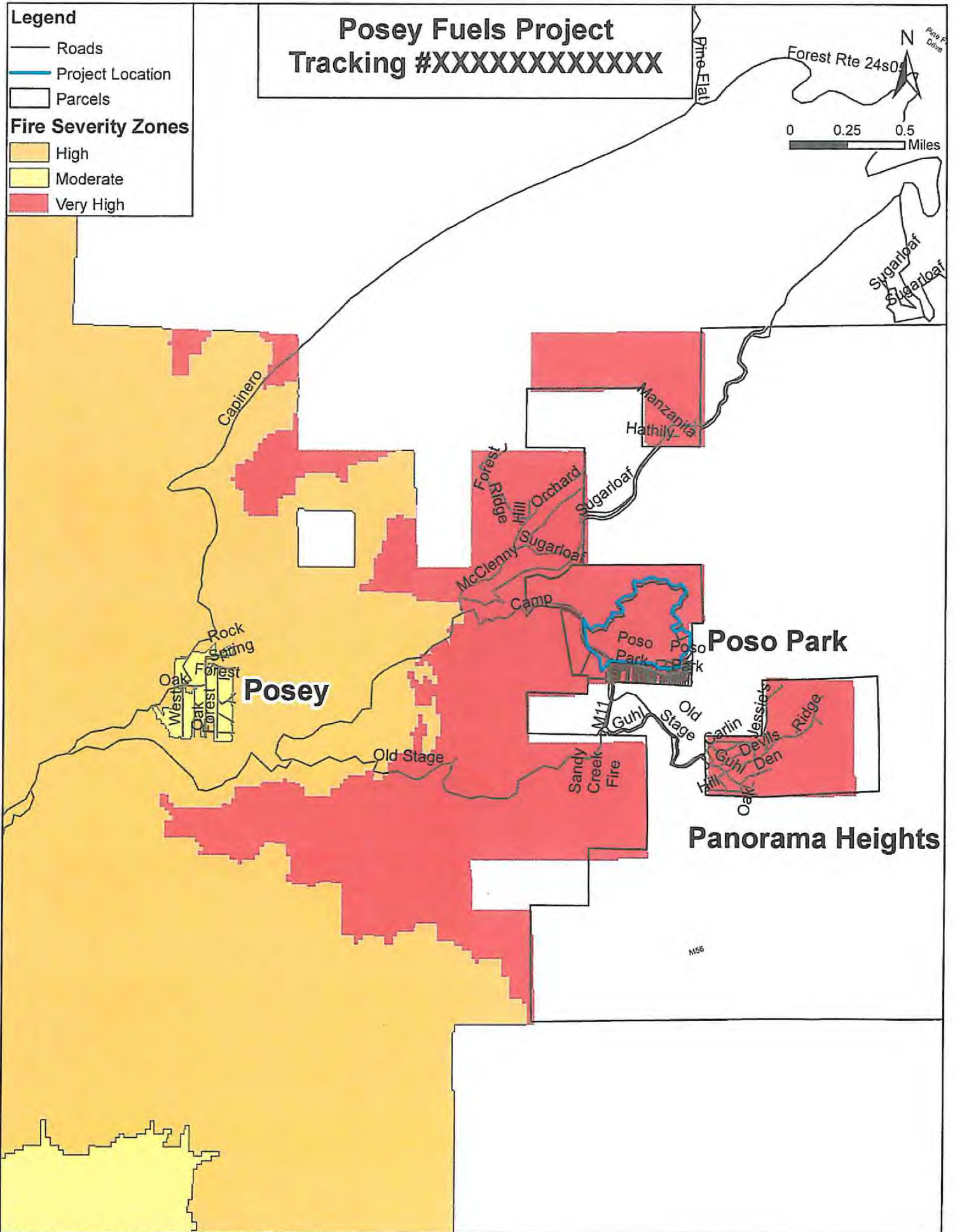
Legend

- Roads
- Project Location
- Parcels

Fire Severity Zones

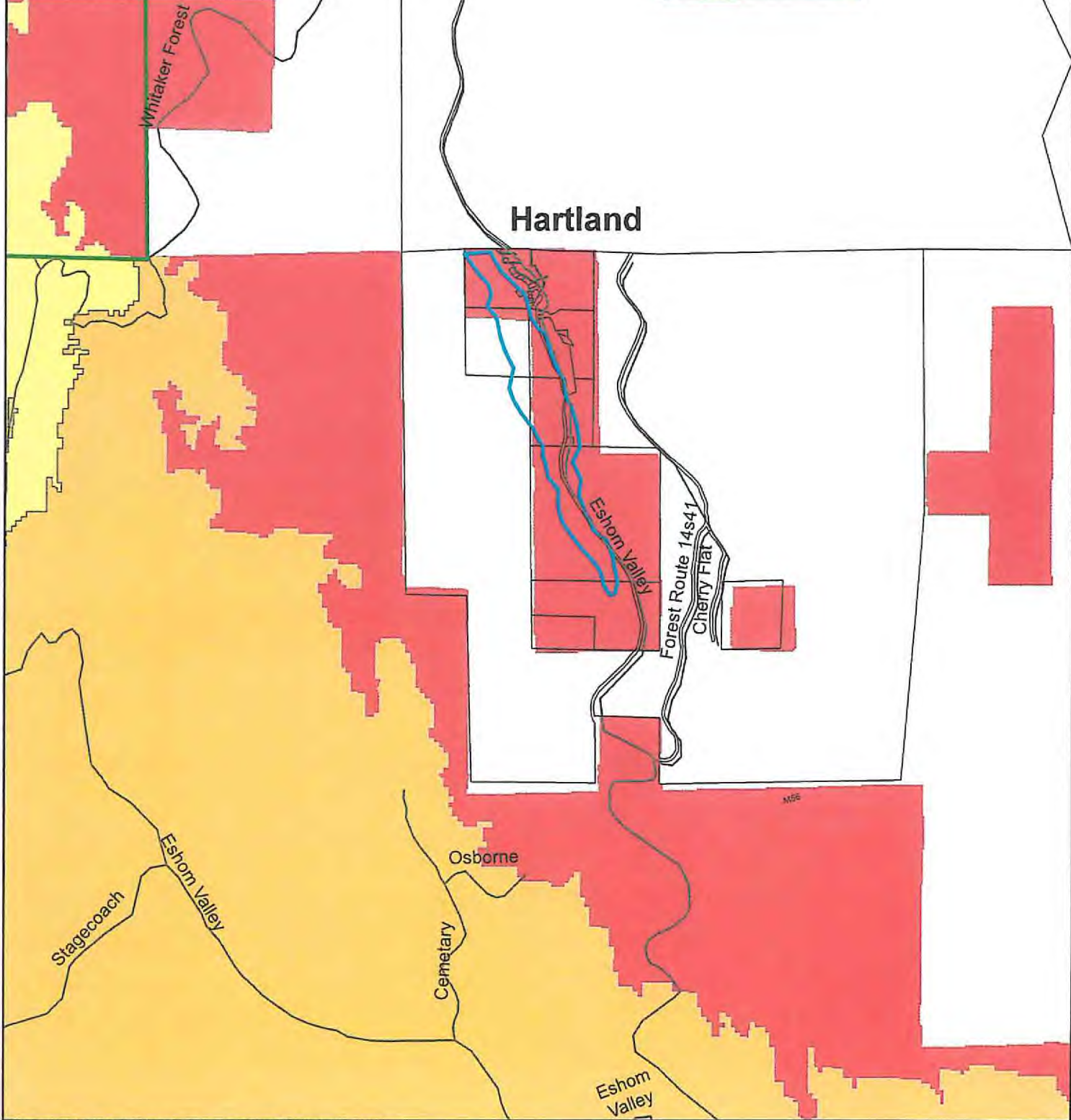
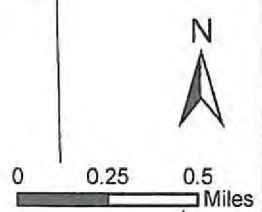
- High
- Moderate
- Very High

0 0.25 0.5 Miles



Hartland Fuels Project Tracking #XXXXXXXXXXXX

- Legend**
- Roads
 - Project Location
 - Parcels
 - County Boundary
 - Fire Severity Zones**
 - High
 - Moderate
 - Very High



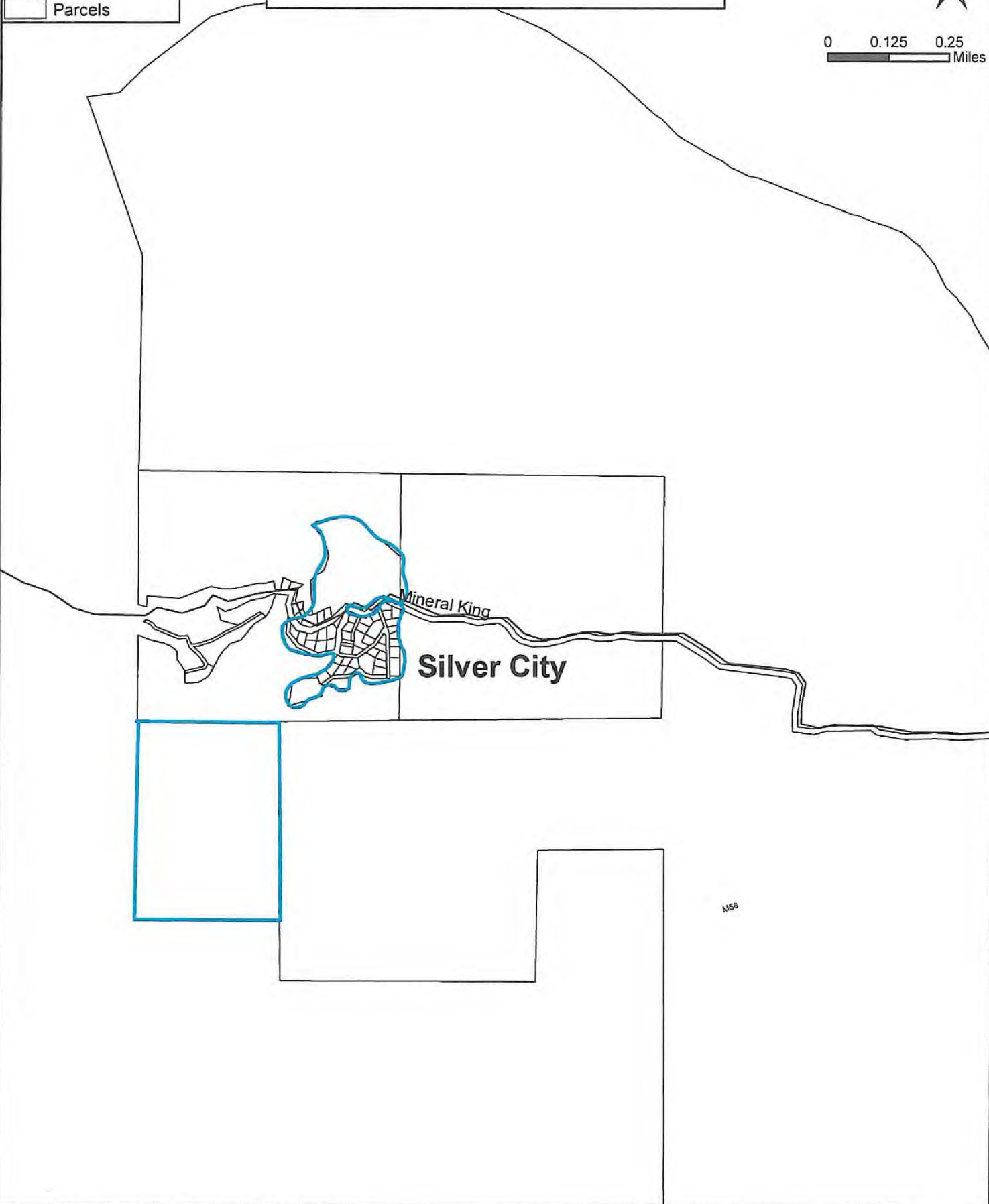
Silver City Fuels Project Tracking #XXXXXXXXXXXX

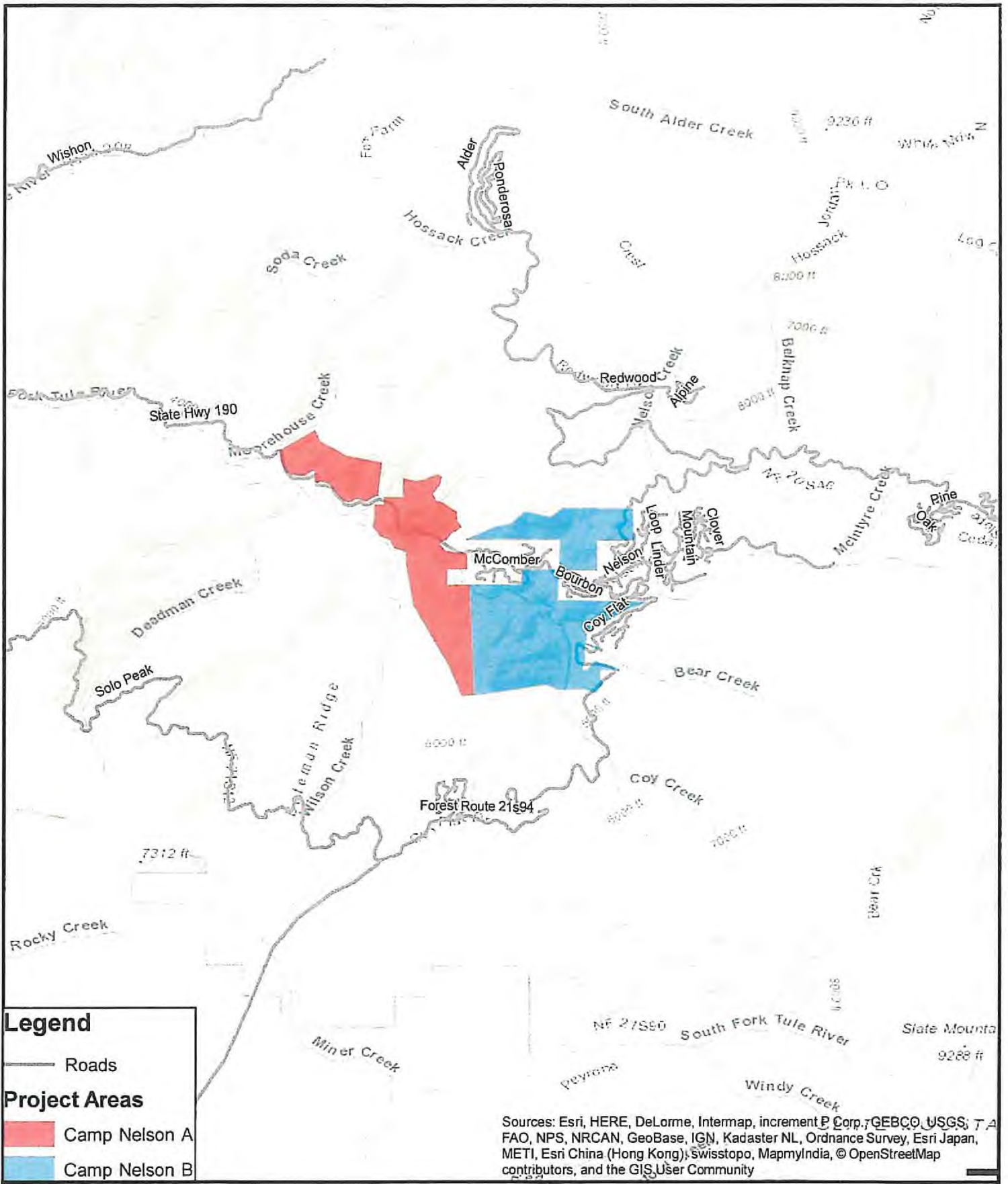
Legend

-  Project Location
-  Roads
-  Parcels



0 0.125 0.25
Miles





Legend

— Roads

Project Areas

■ Camp Nelson A

■ Camp Nelson B

Sources: Esri, HERE, DeLorme, Intermap, increment P Corp., GEBCO, USGS, T.A. FAO, NPS, NRCAN, GeoBase, IGN, Kadaster NL, Ordnance Survey, Esri Japan, METI, Esri China (Hong Kong), Swisstopo, MapmyIndia, © OpenStreetMap contributors, and the GIS User Community

