

# TULARE COUNTY SYSTEMS & TECHNOLOGY EXECUTIVE SUMMARY

---





## TULARE COUNTY CHALLENGES

- Management and Use of Disparate Systems = Time/Cost
- No County-Wide System Communication = Safety Concerns
- ADSI's Largest Customer and Only Customer in CA = Risk
- Data Retrieval is Difficult & Staff Intensive = Inefficiency
- No Name and Address Alerts = Decreased Deputy Safety
- Processes are Manual and Paper Driven = Agency Liability
- Law and Fire Dispatch Inefficiencies = Safety Concerns
- Situational Awareness (Traffic Cameras, Video, Data) = Risk



## TULARE COUNTY GOALS

- Multi-Jurisdictional Data Sharing
- Real-Time, Accurate Information
- Improve County-Wide Emergency Services
- Improve Efficiency Via System Integration
- Long-Term Partnership
- Industry Leading Technology



## SYSTEMS EVALUATION PROCESS

- Discovered a Need to Replace Multiple Disparate Systems
- Searched the Market for New Technologies
  - CAD/RMS/JMS
  - Video Cameras
  - Video Analytics
  - Situational Awareness
  - Analytics
- Identified What Neighboring Agencies Have/Will Purchase
- One Vendor Emerged as the County-Wide Vendor of Choice
- Evaluated Options Through Multiple Demonstrations
- Motorola Solutions Provides Numerous Exclusive Benefits

# COMMANDCENTRAL - Motorola's Portfolio of Software Solutions



## FLEX

- CAD
- RECORDS
- MOBILE
- EQUIPMENT
- PROPERTY
- EVIDENCE
- JAIL
- BIOMETRICS
- LINK ANALYSIS
- CASE MANAGEMENT
- DASHBOARDS



## AWARE

- SITUATIONAL AWARENESS
- CAD INTEGRATION
- VIDEO INTEGRATION
- 3rd PARTY DATA INGEST
- ANALYTICS PLUS



## 9-1-1 CALL HANDLING

- CALL HANDLING (9-1-1 Upgrade)
- NG9-1-1 (9-1-1 Upgrade)
- MASS NOTIFICATION (9-1-1 Upgrade)



## RADIO

- CURRENT CONSOLES (End of Life / End Support)
- RADIO CONSOLES (Upgrading Existing Consoles)
- RADIOS (Already Owned)

# COMMANDCENTRAL

Motorola's Full Suite of Integrated Products Work Together Seamlessly to Increase Safety of Personnel & Community

## COUNTY-WIDE "IN FIELD" TECHNOLOGY FOR FIRE / SHERIFF



Radio  
Infrastructure  
& Consoles



Fire Mobile &  
Fire Records  
Integration



Deputy Field  
Reporting



County-Wide  
Unit Locations



Equipment  
Maintenance



## ENHANCED AWARENESS & INTEGRATION IN DISPATCH



CAD2CAD Call  
Routing Between  
Dispatch Centers



Next Generation  
9-1-1 Call Handling &  
Integrated Call Control



Integrated CAD, Video  
and 911 Cross  
Platform Mapping



Real-Time Video  
& CAD  
Awareness



## ENHANCED CRIME SOLVING TECHNOLOGY THROUGH SEARCH, DASHBOARDS & ANALYTICS



Dashboards &  
Analytics Tools



Link Analysis & Crime  
Pin-Mapping



Detectives County-Wide  
Searching & Data  
Access



## AGENCY-WIDE SYSTEM INTEGRATION



Computer-Aided  
Dispatch



Records &  
Evidence



Jail & Inmate  
Management



Personnel  
Management &  
Training



Courts & Case  
Management  
Integration



# MULTI-JURISDICTIONAL DATA SHARING

Flex enables agencies to seamlessly share information between neighboring jurisdictions, while still preserving individual agency standards and data integrity.

**More than 90 percent of Flex customers share data in a multi-jurisdictional environment.**

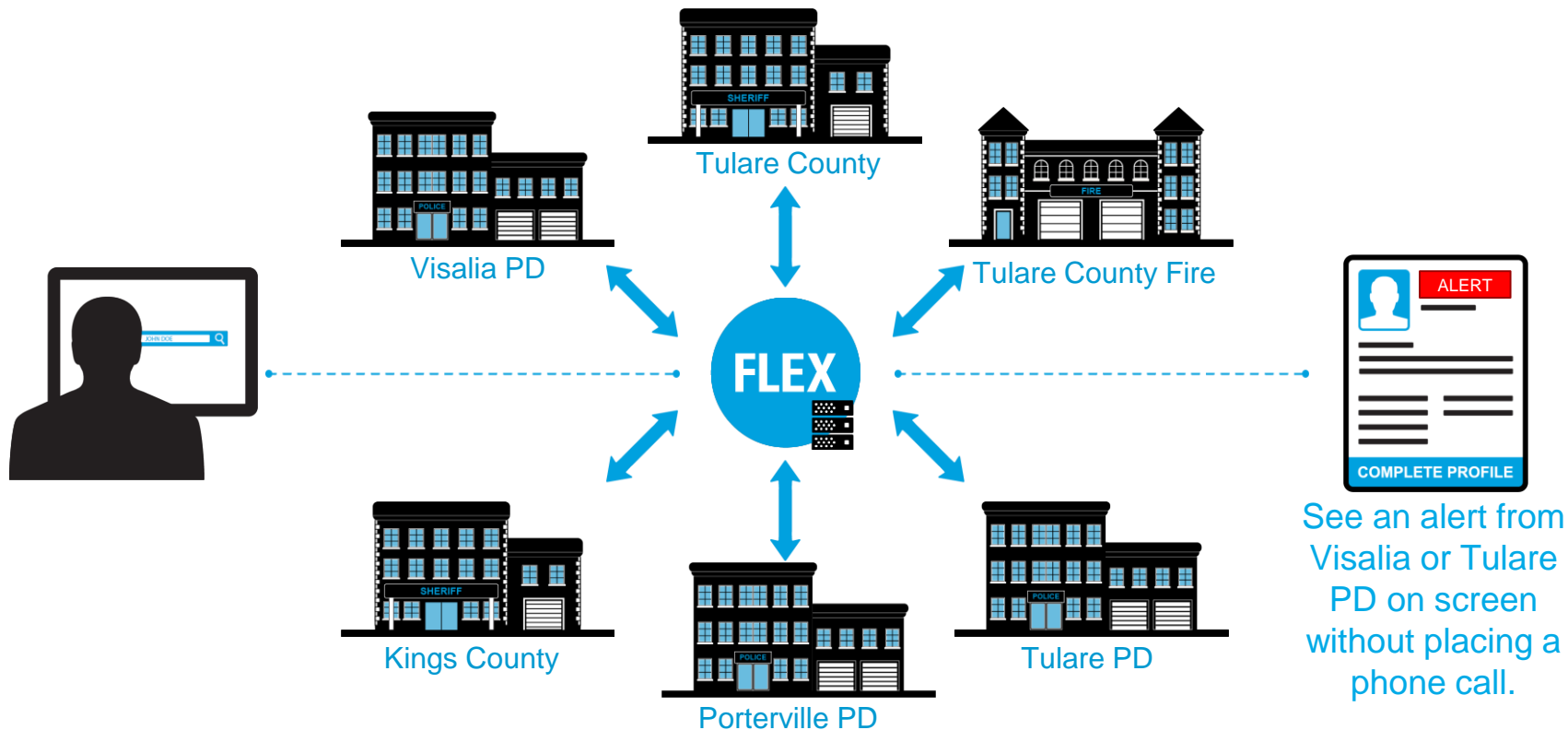






# MULTI-JURISDICTIONAL DATA SHARING

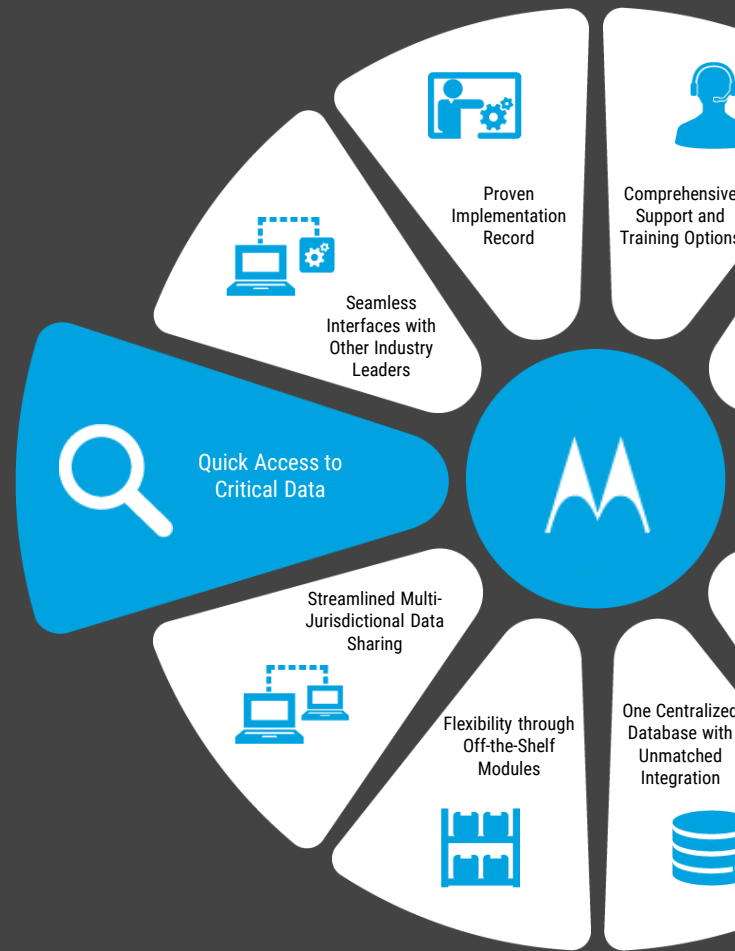
Easily search records from neighboring agencies making first responders safe with all relevant data.



# REAL-TIME, ACCURATE INFORMATION

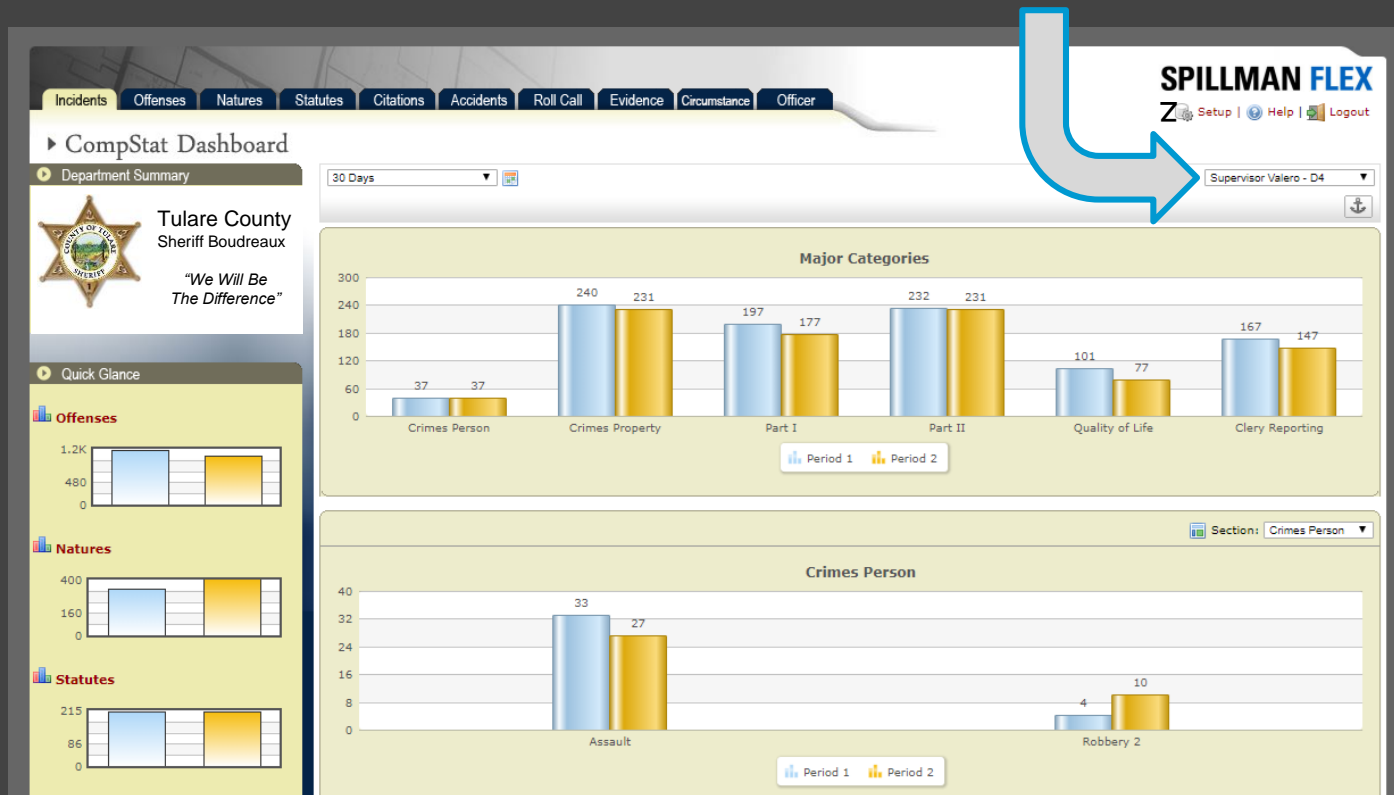
Spillman Flex provides agencies with

- real-time **dashboards**
- automated **reports**
- search **any field**
- built around a **central database**
- easily produce **actionable** intelligence



# REAL-TIME, ACCURATE INFORMATION

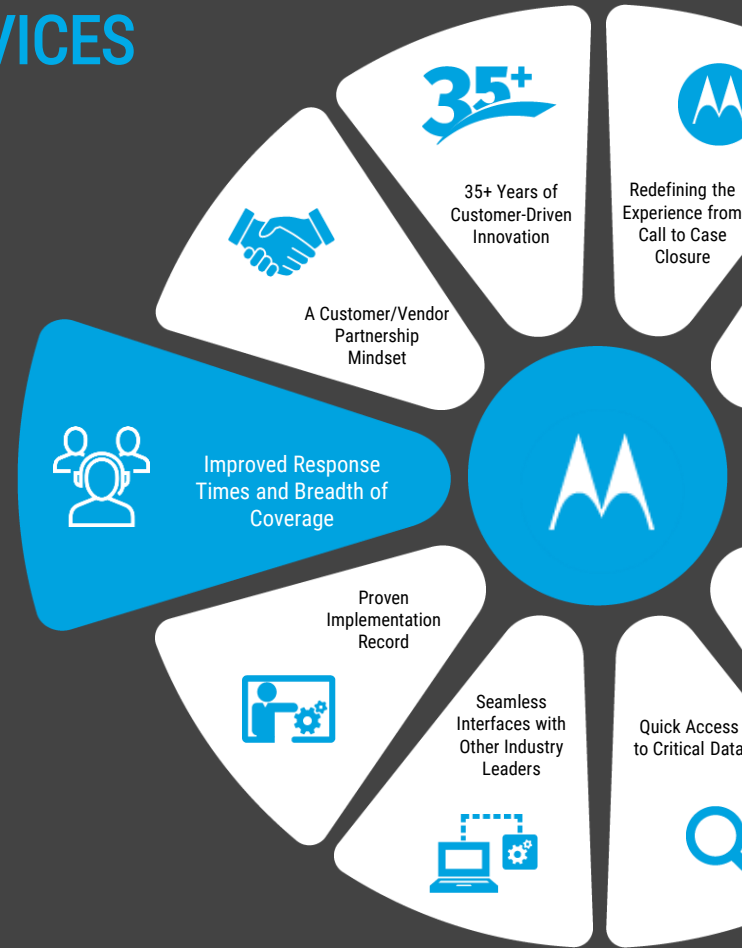
Each Board Supervisor can create/view their own real-time views of their own District.



# IMPROVE COUNTY-WIDE EMERGENCY SERVICES

Having situational awareness in all areas of Tulare County is critical to maintaining balanced coverage. Below are a few of the solutions that will greatly improve public safety throughout Tulare County

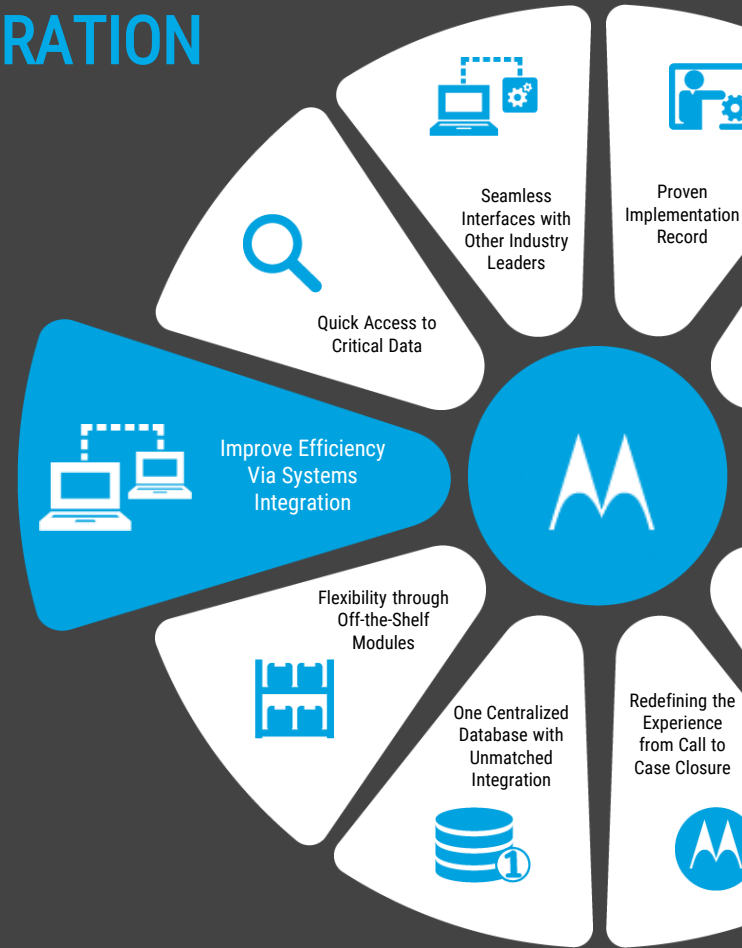
- Improved response times
- Real-time video capture
- Predictive analytics & crime mapping
- CAD2CAD integration between PSAPs
- Cross agency collaboration



# IMPROVE EFFICIENCY VIA SYSTEMS INTEGRATION

## Motorola Ties

- real-time **dashboards**
- automated **reports**
- search **any field**
- built around a **central database**
- easily produce **actionable** intelligence

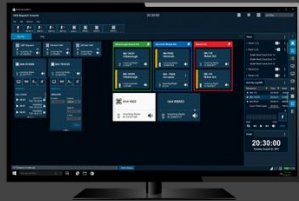


# IMPROVE EFFICIENCY VIA SYSTEM INTEGRATION

ELIMINATE REDUNDANT SYSTEMS WITH ONE FULLY INTEGRATED SUITE OF PRODUCTS



## RADIO



Mission critical radio  
voice and data  
communications



## ANALYTICS



Post Incident and  
Predictive Analytics to  
Optimize Awareness &  
Decisions



## SOFTWARE



Complete, end-to-end  
mission critical  
applications suite  
including CAD, RMS,  
Mobile & Jail



## VIDEO



Video security solutions,  
evidence management,  
advanced analytics



## SERVICES



Managed service,  
cloud delivery, cyber-  
defence

**SMART PUBLIC SAFETY SOLUTIONS  
FOR AGENCIES OF ALL SIZES**



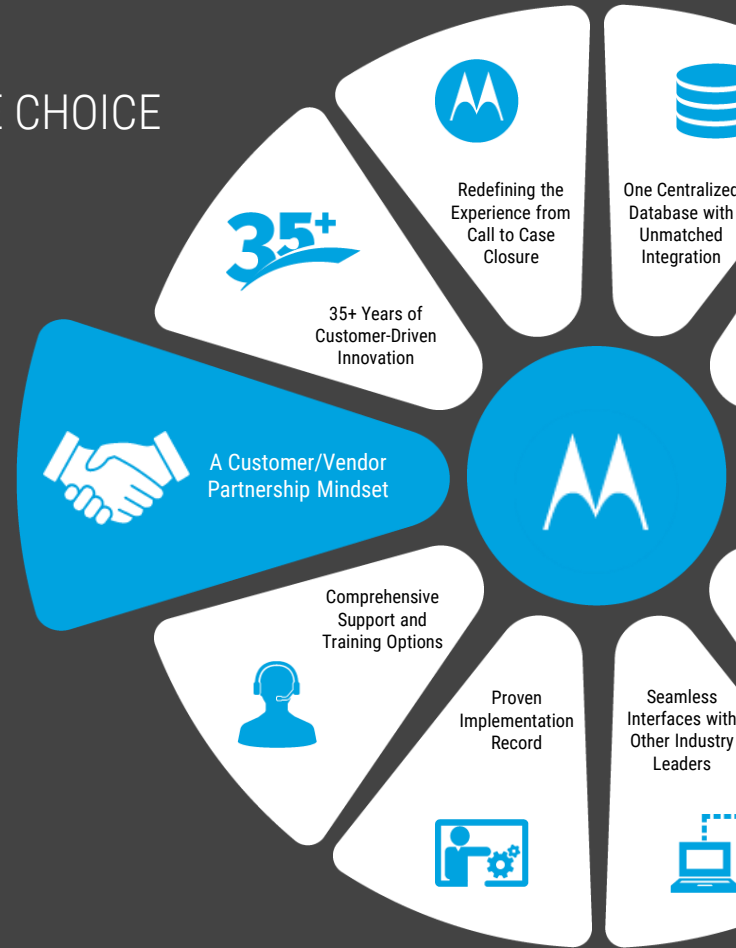
# LONG-TERM PARTNERSHIP

WITH A STABLE 90-YEAR HISTORY MOTOROLA IS THE SAFE CHOICE

## RETURN ON INVESTMENT

- 2,000+ successful Implementations
- Site license to accommodate department growth
- Annual Enhancements Included
- Systems that Risk & Liability

Over 20 percent of customers have used the software for more than 15 years.



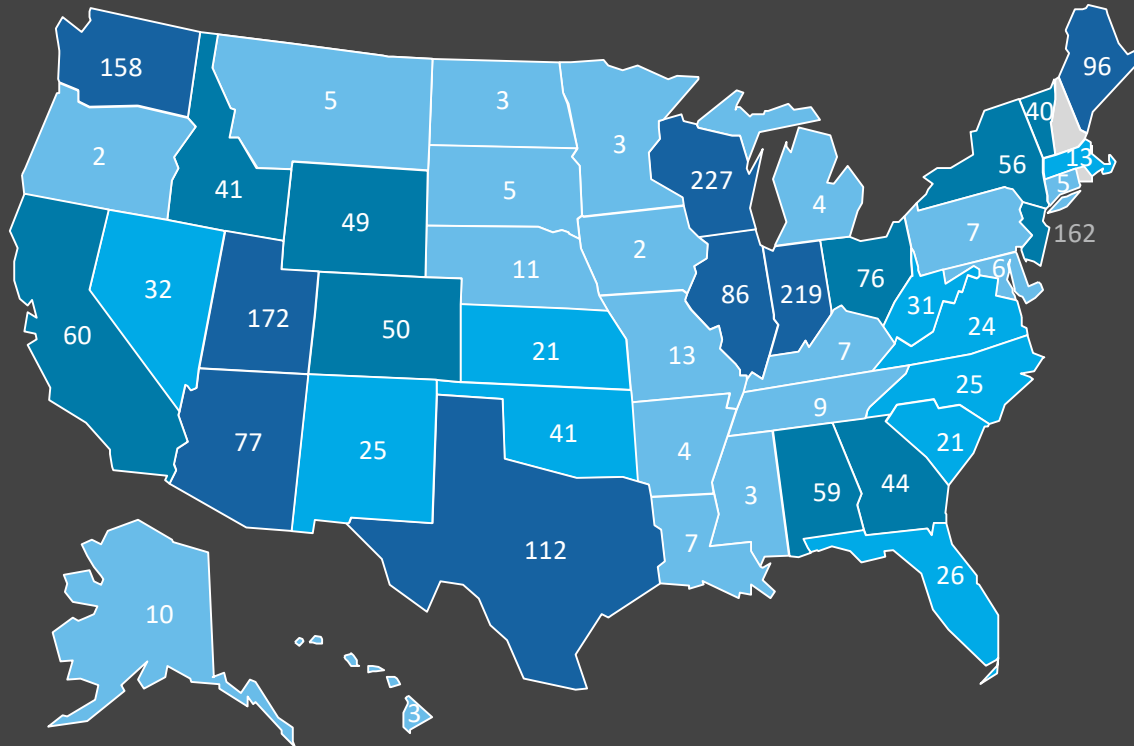


# LONG-TERM PARTNERSHIP

## STRONG CA PRESENCE

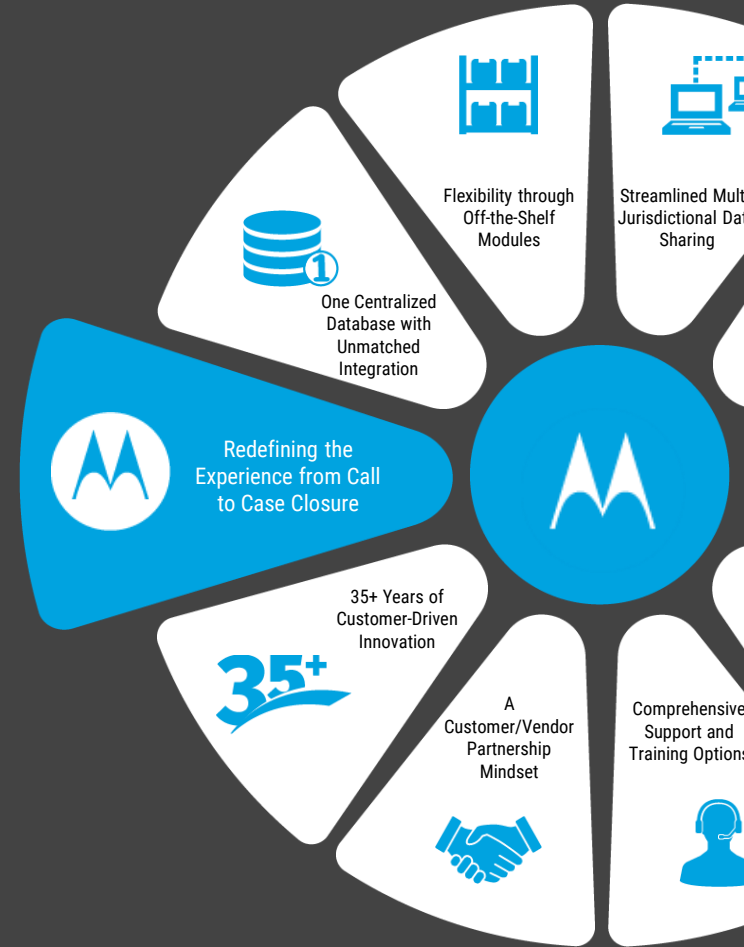
- 60 Customers in the State
- Assembly Bill 953 - Racial Profiling
- California NIBRS Reporting
- CalSUN Motorola Users Group

Stay Ahead of More State Specific Requirements That Will Come With A California-Focused Partner



# INDUSTRY LEADING TECHNOLOGY

Motorola Solutions is investing heavily in market leading technologies so that Tulare County can have the right tools in each Responder's fingertips in the **Moments That Matter**



# INDUSTRY LEADING TECHNOLOGY

## REAL-TIME VIDEO



Real-time video potential for multiple access points on county buildings, schools, businesses, traffic cameras, etc

## UNIFIED LOOK & FEEL



All new look and feel across the entire suite of public safety products, which allows for system consolidation to reduce monitors & keyboards

## ENHANCED SITUATIONAL AWARENESS



Enhanced alerting built into hardware and software to automatically alert dispatch to the Responder's status.

## STREAMLINED PROCESSES



Integration that takes all statements, video, images and incident information and links them in a single report.

1

2

3

4



# Motorola Solutions Exclusive Benefits

## The Only Company That Provides...

- Radio/Console Integration (with our existing systems)
- County-Wide and Cross-County Data Sharing
- CAD Interoperability (with neighboring agencies' systems)
- Industry Leading Partnerships
- Full Suite of Public Safety Products that Work Seamlessly Together
  - CAD/RMS/JMS
  - Video Cameras
  - Video Analytics
  - Situational Awareness
  - Analytics

Motorola is Interested in Making Tulare County Their Show Site in the West

