



**RESOURCE  
MANAGEMENT AGENCY  
COUNTY OF TULARE  
AGENDA ITEM**

**BOARD OF SUPERVISORS**

KUYLER CROCKER  
District One  
PETE VANDER POEL  
District Two  
AMY SHUKLIAN  
District Three  
EDDIE VALERO  
District Four  
DENNIS TOWNSEND  
District Five

**AGENDA DATE:** January 14, 2020 – REVISED

Public Hearing Required	Yes	<input type="checkbox"/>	N/A	<input checked="" type="checkbox"/>
Scheduled Public Hearing w/Clerk	Yes	<input type="checkbox"/>	N/A	<input checked="" type="checkbox"/>
Published Notice Required	Yes	<input type="checkbox"/>	N/A	<input checked="" type="checkbox"/>
Advertised Published Notice	Yes	<input type="checkbox"/>	N/A	<input checked="" type="checkbox"/>
Meet & Confer Required	Yes	<input type="checkbox"/>	N/A	<input checked="" type="checkbox"/>
Electronic file(s) has been sent	Yes	<input checked="" type="checkbox"/>	N/A	<input type="checkbox"/>
Budget Transfer (Aud 308) attached	Yes	<input checked="" type="checkbox"/>	N/A	<input type="checkbox"/>
Personnel Resolution attached	Yes	<input type="checkbox"/>	N/A	<input checked="" type="checkbox"/>
Agreements are attached and signature line for Chairman is marked with tab(s)/flag(s)	Yes	<input checked="" type="checkbox"/>	N/A	<input type="checkbox"/>
CONTACT PERSON: Celeste Perez    PHONE: (559) 624-7010				

**SUBJECT:** Proceedings to Form Assessment District No. 19-17-003-OROSI

**REQUEST(S):**

That the Board of Supervisors:

1. Approve proceedings to form Assessment District No. 19-17-003-OROSI, to pay for storm drainage system maintenance within Subdivision Tract No. TSM 17-003, located on the south side of Avenue 413 east of Road 124, in the community of Orosi; and
2. Approve the proposed Boundary Map and direct the Clerk of the Board to file certified copies with the County Recorder; and
3. Approve the proposed Assessment Diagram and direct the Clerk of the Board to file certified copies with the County Recorder; and
4. Approve the Engineer's Report; and
5. Declare the Board's intention to levy and collect assessments; and
6. Accept the ballot and waiver of public meetings and hearings, including notice thereof, provided by the property owner; and
7. Approve the formation of the Assessment District and imposition of assessments; and
8. Approve the agreement with Self-Help Enterprises authorizing to collect the assessments for Fiscal Year 2019/2020 and 2020/2021 upon first conveyance of each lot; and
9. Authorize the Chairman to sign the agreement; and
10. Approve the AUD 308 form establishing a budget for the Assessment District (4/5ths vote required).

**SUMMARY:**

On December 7, 1993, the Board of Supervisors adopted Resolution No. 93-1375

**SUBJECT:** Proceedings to Form Assessment District No. 19-17-003-OROSI

**DATE:** January 14, 2020

requiring the formation of an assessment district for the maintenance of drainage systems resulting from land division and/or development activities. Planning Commission Resolution No. 9365, approving the tentative map for Subdivision Tract No. TSM 17-003, required the formation of a storm drainage maintenance assessment district as a condition precedent to the recordation of the Final Map for Subdivision Tract No. TSM 17-003. The Benefit Assessment Act of 1982, Section 54703 et seq. of the Government Code, provides for the formation of assessment districts to fund the maintenance of the storm drainage system. The subdivider, Self-Help Enterprises, has requested the County form an assessment district to pay for maintenance of the storm drainage system serving Subdivision Tract No. TSM 17-003.

Subdivision Tract No. TSM 17-003 consists of 7.04 acres divided into 37 residential lots with one lot designated as a storm drain basin to be constructed in one phase.

Construction cost of the drainage system improvements will be borne by the subdivider of Subdivision Tract No. TSM 17-003. The cost of maintaining these improvements and administering this assessment district is proposed to be provided by assessing the 37 residential lots. The budget for the first year is reflected in the AUD 308 form (Attachment H). Based on the cost of providing these services, each of the 37 assessable lots within Subdivision Tract No. TSM 17-003, will be assessed an annual fee of \$37.10. A Consumer Price Index adjustment to cover inflationary costs, based on the increase in cost of goods and services as determined by the U.S. Department of Labor, Bureau of Labor Statistics, is included in the annual increases to each parcel and will not require an election or approval by the owners of the assessed lots.

Self-Help Enterprises is the sole owner of all properties and parcels of Subdivision Map No. TSM 17-003. The property owner has executed the Assessment Ballot and Waiver of Public Meeting and Hearing requesting that the Tulare County Board of Supervisors proceed, without further meeting or hearing, with the immediate formation of the proposed Tulare County Assessment District No. 19-17-003-OROSI and the imposition of assessments to cover the costs of maintaining the storm drainage system. County Counsel prepared the ballot waiving the public meeting, hearing, including notice of the associated resolution forming the assessment district and imposition of assessments.

**FISCAL IMPACT/FINANCING:**

No Net County Cost.

All costs for engineering, district supervision and maintenance of the new storm drainage system are funded by the assessment district.

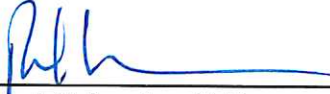
**LINKAGE TO THE COUNTY OF TULARE STRATEGIC BUSINESS PLAN:**

The County's five-year strategic plan includes a Safety and Security initiative to provide for the safety and security of the public. The formation of this assessment district helps fulfill this initiative by ensuring and maintaining adequate storm drainage

**SUBJECT:** Proceedings to Form Assessment District No. 19-17-003-OROSI  
**DATE:** January 14, 2020

systems for the safety and protection of the public.

**ADMINISTRATIVE SIGN-OFF:**



---

Reed Schenke, P.E.  
Director

cc: County Administrative Office

- Attachment(s) Attachment A - Vicinity Map  
Attachment B - Proposed Boundary Map  
Attachment C - Assessment Diagram  
Attachment D - Engineer's Report  
Attachment E - Assessment Ballot Waiver  
Attachment F - Notice of Assessment  
Attachment G - Agreement to Collect Assessments  
Attachment H - AUD 308 Form

# BEFORE THE BOARD OF SUPERVISORS COUNTY OF TULARE, STATE OF CALIFORNIA

IN THE MATTER OF PROCEEDINGS TO ) Resolution No. \_\_\_\_\_  
FORM ASSESSMENT DISTRICT NO. ) Agreement No. \_\_\_\_\_  
19-17-003-OROSI )

UPON MOTION OF SUPERVISOR \_\_\_\_\_, SECONDED BY  
SUPERVISOR \_\_\_\_\_, THE FOLLOWING WAS ADOPTED BY THE BOARD OF  
SUPERVISORS, AT AN OFFICIAL MEETING HELD JANUARY 14, 2020, BY THE  
FOLLOWING VOTE:

AYES:  
NOES:  
ABSTAIN:  
ABSENT:

ATTEST: JASON T. BRITT  
COUNTY ADMINISTRATIVE OFFICER/  
CLERK, BOARD OF SUPERVISORS

BY: \_\_\_\_\_  
Deputy Clerk

\* \* \* \* \*

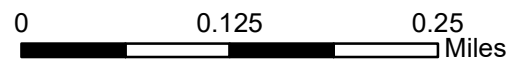
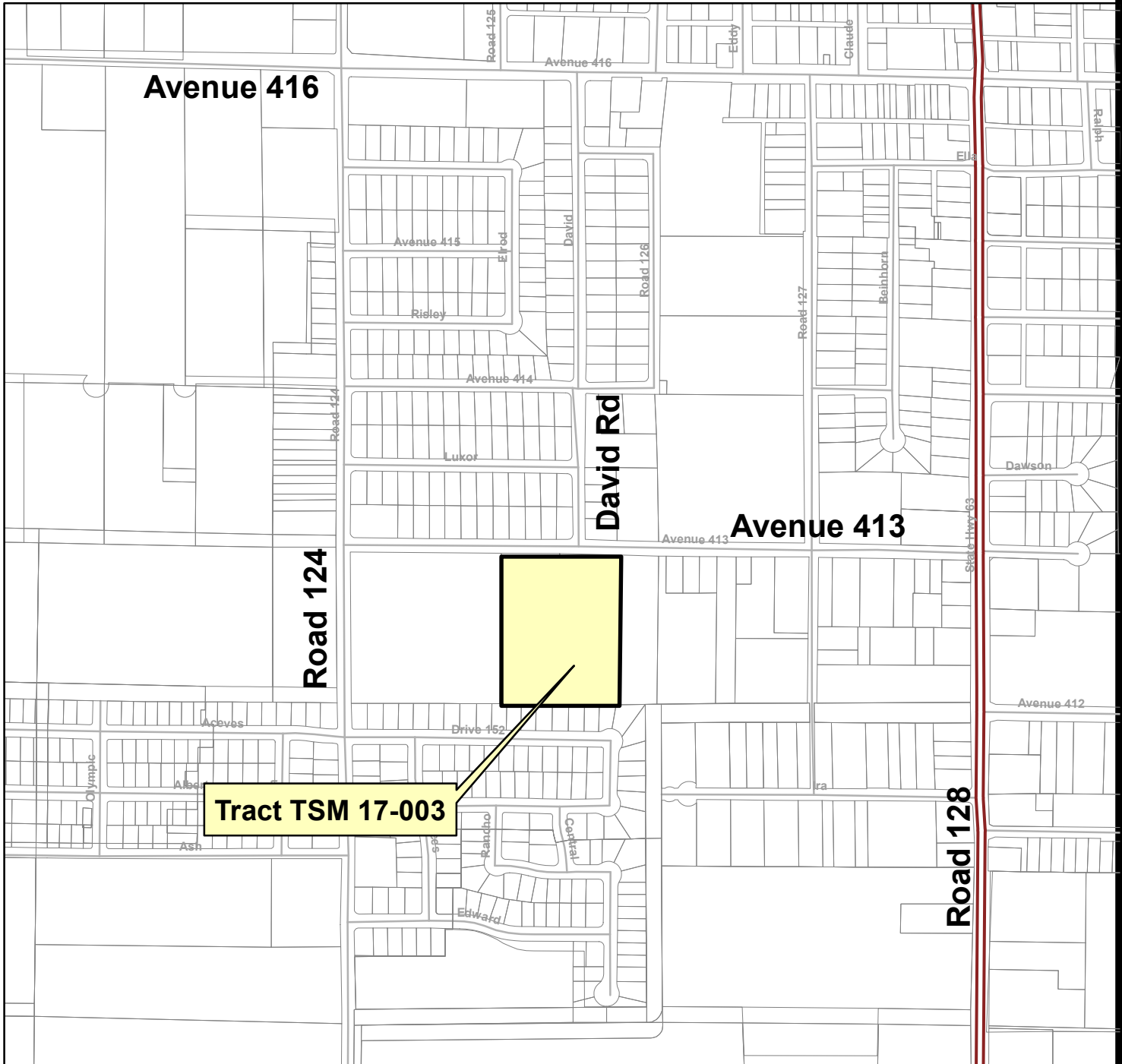
1. Approved proceedings to form Assessment District No. 19-17-003-OROSI, to pay for storm drainage system maintenance within Subdivision Tract No. TSM 17-003, located on the south side of Avenue 413 east of Road 124, in the community of Orosi; and
2. Approved the proposed Boundary Map and directed the Clerk of the Board to file certified copies with the County Recorder; and
3. Approved the proposed Assessment Diagram and directed the Clerk of the Board to file certified copies with the County Recorder; and
4. Approved the Engineer's Report; and
5. Declared the Board's intention to levy and collect assessments; and
6. Accepted the ballot and waiver of public meetings and hearings, including notice thereof, provided by the property owner; and
7. Approved the formation of the Assessment District and imposition of assessments; and
8. Approved the agreement with Self-Help Enterprises authorizing to collect the assessments for Fiscal Year 2019/2020 and 2020/2021 upon first conveyance of each lot; and
9. Authorized the Chairman to sign the agreement; and
10. Approved the AUD 308 form establishing a budget for the Assessment District (4/5ths vote required).

# Attachment A

## Vicinity Map



# Vicinity Map For TSM 17-003



Supervisorial District: 1

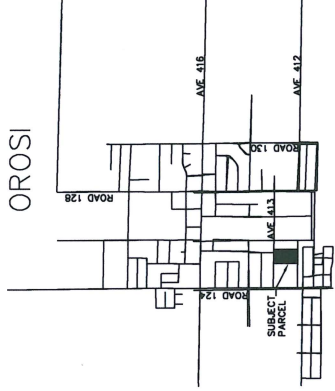
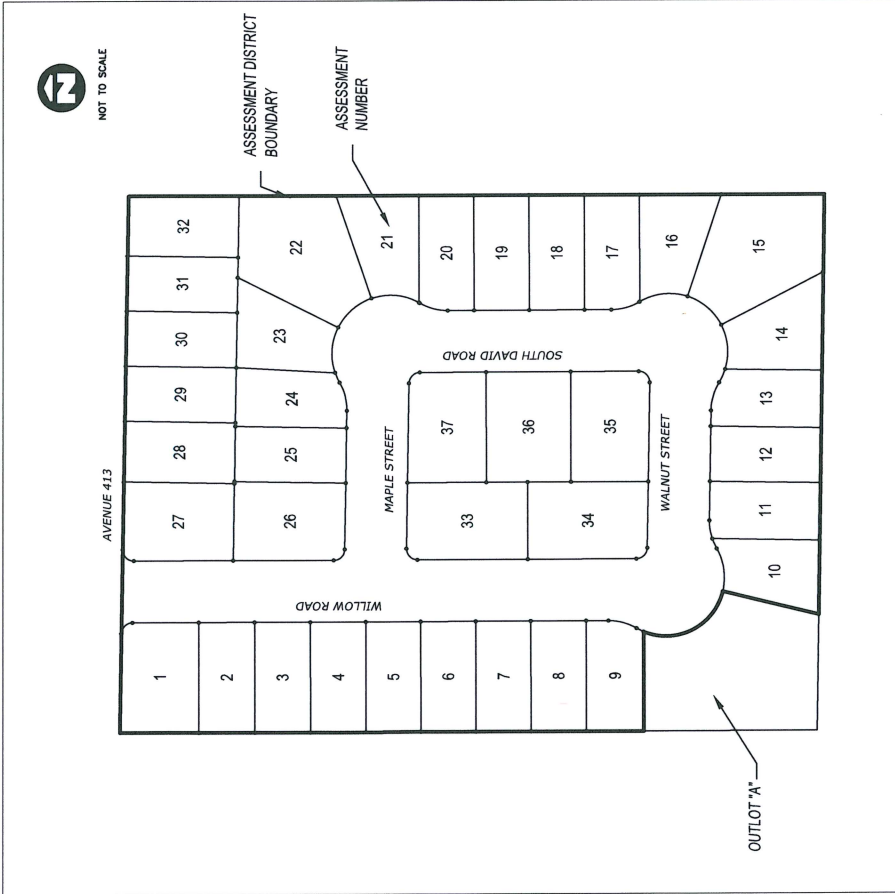


Attachment B  
Proposed Boundary Map

# PROPOSED BOUNDARIES

## ASSESSMENT DISTRICT NO. 19-003-OROSI OF THE COUNTY OF TULARE, STATE OF CALIFORNIA

BEING SITUATED IN A PORTION OF THE SOUTH HALF OF THE SOUTHWEST QUARTER  
OF THE NORTHEAST QUARTER OF SECTION 18, TOWNSHIP 16 SOUTH, RANGE 25 EAST,  
MOUNT DIABLO BASE & MERIDIAN, IN THE COUNTY OF TULARE, STATE OF CALIFORNIA



VICINITY MAP NOT TO SCALE

Filed in the office of the Clerk of the Board of Supervisors,  
this \_\_\_ day of \_\_\_, 20\_\_.

JASON T. BRITT, COUNTY ADMINISTRATIVE  
OFFICER/CLERK OF THE BOARD OF SUPERVISORS

BY \_\_\_\_\_  
DEPUTY

I hereby certify that the within map showing proposed boundaries of Assessment District  
No. 19-003-Orosi, of the County of Tulare, State of California, was approved  
by the Board of Supervisors of the County of Tulare at a regular meeting thereof, held on  
the \_\_\_ day of \_\_\_, 20\_\_\_, by its Resolution No. \_\_\_\_\_.

JASON T. BRITT, COUNTY ADMINISTRATIVE  
OFFICER/CLERK OF THE BOARD OF SUPERVISORS

BY \_\_\_\_\_  
DEPUTY

Filed this \_\_\_ day of \_\_\_, 20\_\_ at the hour of \_\_\_ o'clock, \_\_\_ m.  
in book \_\_\_ of Maps of Assessment and Community Facilities Districts  
at page \_\_\_ in the office of the county recorder in the County of Tulare,  
State of California.

DOC. NUMBER: \_\_\_\_\_ FEE PAID: \_\_\_\_\_

ROLAND P. HILL,  
TULARE COUNTY ASSESSOR/CLERK-RECORDER

BY \_\_\_\_\_  
DEPUTY



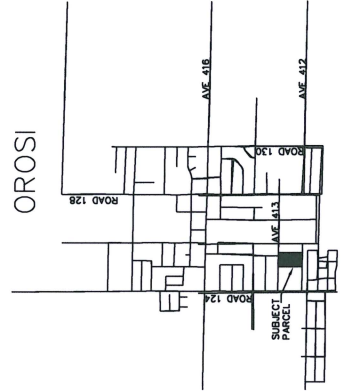
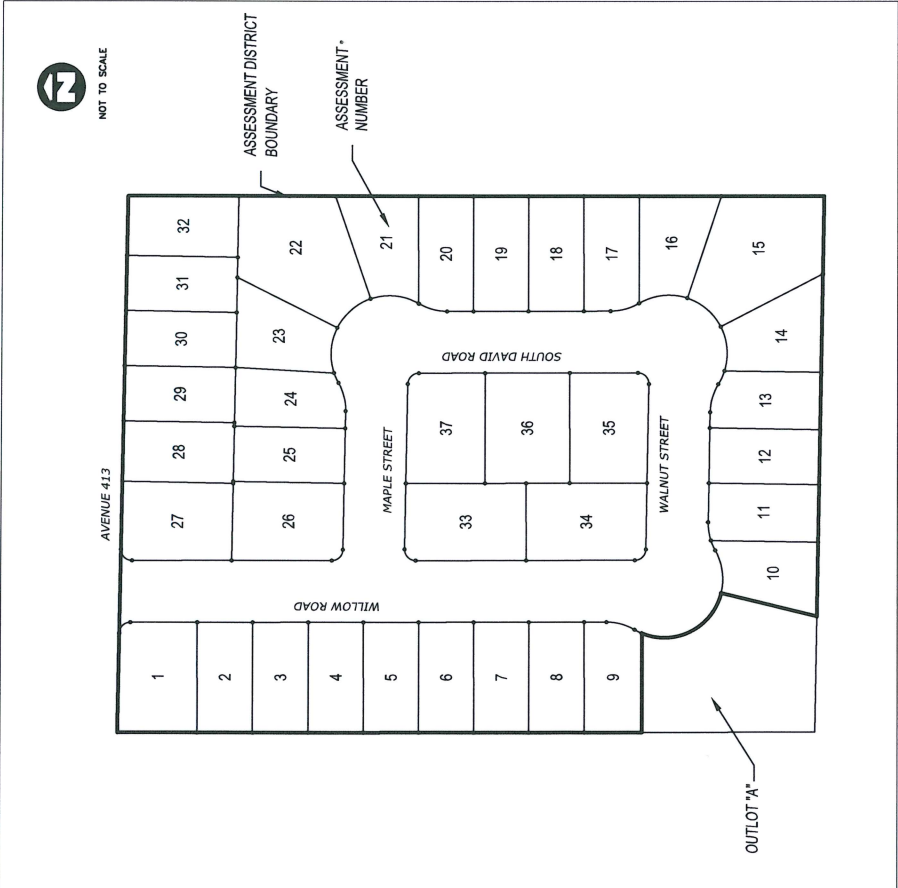
# Attachment C

## Assessment Diagram

# ASSESSMENT DIAGRAM

ASSESSMENT DISTRICT NO. 19-003-OROSI  
OF THE COUNTY OF TULARE,  
STATE OF CALIFORNIA

BEING SITUATED IN A PORTION OF THE SOUTH HALF OF THE SOUTHWEST QUARTER  
OF THE NORTHEAST QUARTER OF SECTION 18, TOWNSHIP 16 SOUTH, RANGE 23 EAST,  
MOUNT DIABLO BASE & MERIDIAN, IN THE COUNTY OF TULARE, STATE OF CALIFORNIA



VICINITY MAP NOT TO SCALE

Recorded in the office of the Clerk of the Director of Transportation, this \_\_\_ day of \_\_\_, 20\_\_.

Director of Transportation

Filed in the office of the Clerk of the Board of Supervisors, this \_\_\_ day of \_\_\_, 20\_\_.

JASON T. BRITT, COUNTY ADMINISTRATIVE OFFICER/CLERK OF THE BOARD OF SUPERVISORS

BY \_\_\_\_\_ DEPUTY

An assessment was levied by the Board of Supervisors on the lots, pieces, and parcel of land shown on this Assessment Diagram. The assessment was levied on the \_\_\_ day of \_\_\_, 20\_\_; the Assessment Diagram and the Assessment Roll were filed in the office of the Director of Transportation of that county on the \_\_\_ day of \_\_\_, 20\_\_.

Reference is made to the Assessment Roll filed in the office of the Director of Transportation for the exact amount of each assessment levied against each parcel of land shown on this Assessment Diagram.

JASON T. BRITT, COUNTY ADMINISTRATIVE OFFICER/CLERK OF THE BOARD OF SUPERVISORS

BY \_\_\_\_\_ DEPUTY

Filed this \_\_\_ day of \_\_\_, 20\_\_ at the hour of \_\_\_ o'clock, \_\_\_ m. in book \_\_\_ of Maps of Assessment and Community Facilities Districts at page \_\_\_, in the office of the County Recorder in the County of Tulare, State of California.

DOC. NUMBER: \_\_\_\_\_ FEE PAID: \_\_\_\_\_

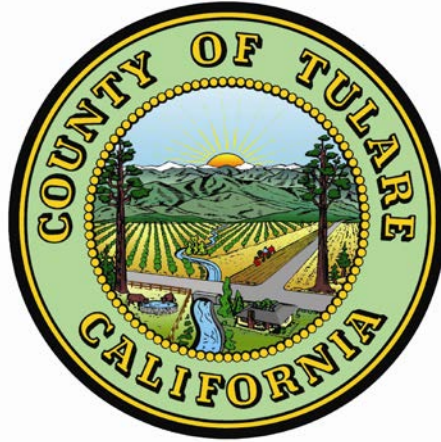
ROLAND P. HILL, TULARE COUNTY ASSESSOR / CLERK-RECORDER

BY \_\_\_\_\_ DEPUTY

# Attachment D

## Engineer's Report

# ENGINEER'S REPORT



IN THE MATTER OF FORMATION OF  
COUNTY OF TULARE  
ASSESSMENT DISTRICT NO. 19-17-003-OROSI

Reed Schenke, P.E.  
Public Works Director

Tulare County, Resource Management Agency

## ENGINEER'S REPORT

### ASSESSMENT DISTRICT NO. 19-17-003-OROSI

#### I. GENERAL

The Tulare County Board of Supervisors directed, in Board Resolution No. 93-1375, that the County will accept no new drainage systems in any new land division or development unless the developer provides a mechanism to fund future operation and maintenance of the drainage system. The Subdivider, Self Help Enterprises, of Subdivision Tract No. TSM 17-003 is requesting that the County form an assessment district to pay for maintenance of the drainage system serving Subdivision Tract No. TSM 17-003. The Benefit Assessment Act of 1982, Section 54703 et seq. of the Government Code provides for formation of assessment districts to fund the maintenance of drainage systems. Subdivision Tract No. TSM 17-003 is a division of a 7.04-acre site into 37 residential lots located on the south side of Avenue 413 east of Road 124 in the community of Orosi.

Construction costs of the storm drainage improvements will be borne by the subdivider of Subdivision Tract No. TSM 17-003. The cost of maintaining these improvements and administering this assessment district is to be provided by assessing the 37 residential lots within the subdivision.

#### II. IMPROVEMENTS

Drainage system improvements to be maintained under this assessment district include a storm drain system consisting of approximately 1,010 L.F. of pipe, 6 drainage inlets, 4 manholes and one ponding basin.

#### III. FORMULA FOR INFLATION ADJUSTMENT

The annual assessments beginning in the 2019/2020 fiscal year, and each fiscal year thereafter, shall be adjusted for inflation according to the following formula: The Consumer Price Index [Urban Wage Earners and Clerical Workers for the Los Angeles-Anaheim-Riverside CSMA] published by the United States Department of Labor, Bureau of Labor Statistics (the "Index"), which will be published for the first six months of the 2019/2020 fiscal year. Each fiscal year thereafter shall be compared to the Index published for the same period in the prior fiscal year. If the Index of the last fiscal year has increased over the Index of the prior fiscal year, the assessment for the coming fiscal year shall be set by multiplying the assessment amount, as previously adjusted by this formula, imposed in the last fiscal year by a fraction, the numerator of which is the Index of the last fiscal year and the denominator of which is the Index of the prior fiscal year.

If the Index is changed so that base year differs from that used for Index period of the prior fiscal year most immediately preceding the Index period for the last fiscal year, the Index shall be converted in accordance with the conversion factor published by the United States Department of Labor, Bureau of Labor Statistics.

## ENGINEER'S REPORT

### ASSESSMENT DISTRICT NO. 19-17-003-OROSI

If the Index is discontinued or revised during the Index period of any fiscal year, such other government index or computation with which it is replaced shall be used in order to obtain substantially the same result as would be obtained if the Index had not been discontinued or revised.

This formula for inflation adjustment shall provide a progressive adjustment resulting in increased maximum annual assessments to cover increased costs due to inflation.

#### IV. BENEFIT ANALYSIS

There is special benefit to the lots, or parcels, assessed as opposed to a general benefit to the public at large. Each lot within this assessment district receives the special benefit of a storm water drainage system providing storage for excess water runoff which may also prevent flooding within the subdivision boundary. The services described above will only serve the lots within the proposed assessment district and only those properties within Subdivision Tract No. TSM 17-003 will receive benefits. All lots or parcels within the assessment district receive this special benefit equally.

#### V. ESTIMATE OF EXPENSES

The proposed assessment is to provide a method for all parcels benefiting from the storm drainage services to pay their proportional share of the cost of providing those services. The County, as the tax levying and collecting agency, will fix the assessments each fiscal year on the tax rolls on parcels within the proposed storm drainage assessment district receiving the special benefit. Penalties will be assessed for delinquent payments as well as non-payment. Operation and maintenance expenses, as well as the expense to administer the district are included in the annual assessment.

A detailed breakdown of estimated costs to maintain these improvements and administer the assessment district is attached to this report.

The estimated annual assessment of \$37.10 is for the 2019/2020 fiscal year. The assessments for each fiscal year thereafter may be revised according to the formula for inflation adjustment set out in Section III for the 2020/2021 fiscal year and each fiscal year thereafter.

#### VI. ASSESSMENT

It is recommended that each of the 37 lots be assessed equally an amount of \$37.10 for fiscal year 2019/2020 as identified on the following assessment roll.

ENGINEER'S REPORT

ASSESSMENT DISTRICT NO. 19-17-003-OROSI

Assessment District No. 19-17-003-OROSI Property Owner Listing

Assessment Number*	Owner's Name	Assessment (\$)
1	Self Help Enterprises	37.10
2	Self Help Enterprises	37.10
3	Self Help Enterprises	37.10
4	Self Help Enterprises	37.10
5	Self Help Enterprises	37.10
6	Self Help Enterprises	37.10
7	Self Help Enterprises	37.10
8	Self Help Enterprises	37.10
9	Self Help Enterprises	37.10
10	Self Help Enterprises	37.10
11	Self Help Enterprises	37.10
12	Self Help Enterprises	37.10
13	Self Help Enterprises	37.10
14	Self Help Enterprises	37.10
15	Self Help Enterprises	37.10
16	Self Help Enterprises	37.10
17	Self Help Enterprises	37.10
18	Self Help Enterprises	37.10
19	Self Help Enterprises	37.10
20	Self Help Enterprises	37.10
21	Self Help Enterprises	37.10
22	Self Help Enterprises	37.10
23	Self Help Enterprises	37.10
24	Self Help Enterprises	37.10
25	Self Help Enterprises	37.10
26	Self Help Enterprises	37.10
27	Self Help Enterprises	37.10
28	Self Help Enterprises	37.10
29	Self Help Enterprises	37.10
30	Self Help Enterprises	37.10
31	Self Help Enterprises	37.10
32	Self Help Enterprises	37.10
33	Self Help Enterprises	37.10
34	Self Help Enterprises	37.10
35	Self Help Enterprises	37.10

ENGINEER'S REPORT

ASSESSMENT DISTRICT NO. 19-17-003-OROSI

36	Self Help Enterprises	37.10
37	Self Help Enterprises	37.10

---

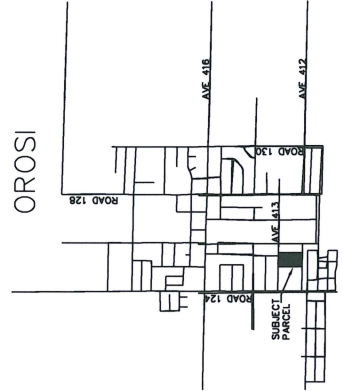
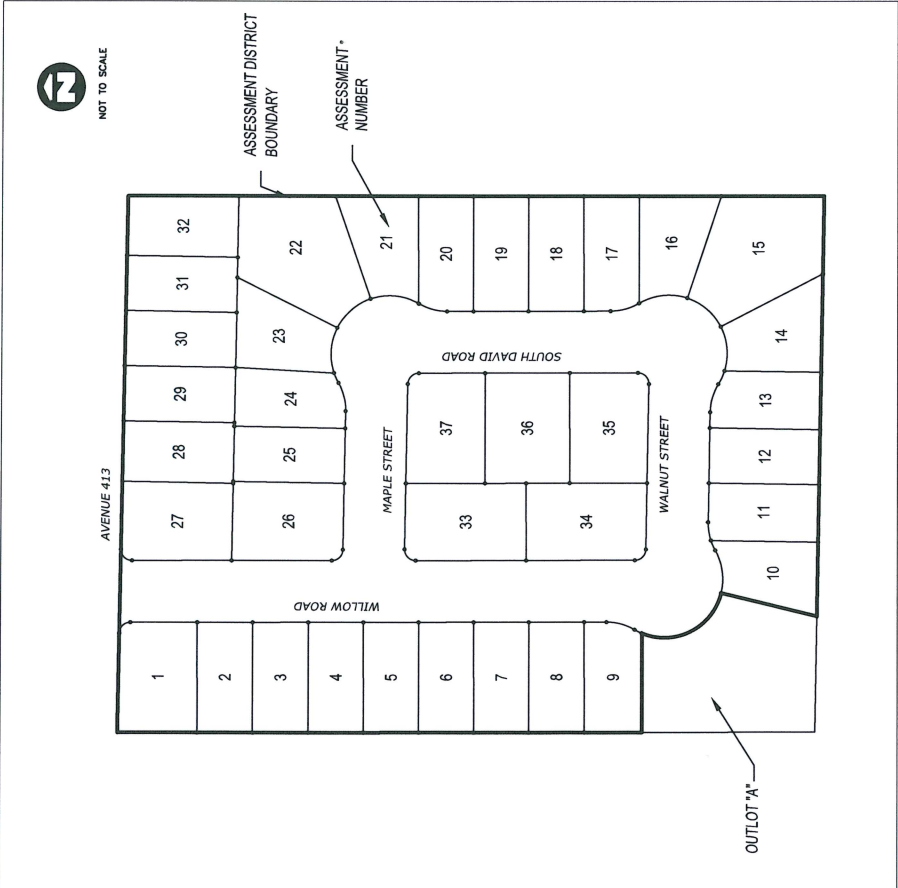
\*Assessment numbers shown, refer to Proposed Boundaries Diagram, correspond to lot numbers on the final map Subdivision Tract No. TSM 17-003.



# ASSESSMENT DIAGRAM

ASSESSMENT DISTRICT NO. 19-003-OROSI  
OF THE COUNTY OF TULARE,  
STATE OF CALIFORNIA

BEING SITUATED IN A PORTION OF THE SOUTH HALF OF THE SOUTHWEST QUARTER  
OF THE NORTHEAST QUARTER OF SECTION 18, TOWNSHIP 16 SOUTH, RANGE 23 EAST,  
MOUNT DIABLO BASE & MERIDIAN, IN THE COUNTY OF TULARE, STATE OF CALIFORNIA



VICINITY MAP NOT TO SCALE

Recorded in the office of the Clerk of the Director of Transportation, this \_\_\_\_ day  
of \_\_\_\_\_, 20\_\_\_\_.

\_\_\_\_\_  
Director of Transportation

Filed in the office of the Clerk of the Board of Supervisors,  
this \_\_\_\_ day of \_\_\_\_\_, 20\_\_\_\_.

JASON T. BRITT, COUNTY ADMINISTRATIVE  
OFFICER/CLERK OF THE BOARD OF SUPERVISORS

BY \_\_\_\_\_  
DEPUTY

An assessment was levied by the Board of Supervisors on the lots, pieces, and parcel of land shown  
on this Assessment Diagram.

The assessment was levied on the \_\_\_\_ day of \_\_\_\_\_, 20\_\_\_\_; the Assessment Diagram and the  
Assessment Roll were filed in the office of the Director of Transportation of that county on  
the \_\_\_\_ day of \_\_\_\_\_, 20\_\_\_\_.

Reference is made to the Assessment Roll filed in the office of the Director of Transportation for the  
exact amount of each assessment levied against each parcel of land shown on this Assessment  
Diagram.

JASON T. BRITT, COUNTY ADMINISTRATIVE  
OFFICER/CLERK OF THE BOARD OF SUPERVISORS

BY \_\_\_\_\_  
DEPUTY

Filed this \_\_\_\_ day of \_\_\_\_\_, 20\_\_\_\_ at the hour of \_\_\_\_ o'clock \_\_\_\_ m.  
in book \_\_\_\_ of Maps of Assessment and Community Facilities Districts  
at page \_\_\_\_; in the office of the County Recorder in the County of Tulare, State of  
California.

DOC. NUMBER: \_\_\_\_\_ FEE PAID: \_\_\_\_\_

ROLAND P. HILL,  
TULARE COUNTY ASSESSOR / CLERK-RECORDER

BY \_\_\_\_\_  
DEPUTY

Attachment E  
Assessment Ballot Waiver

**TULARE COUNTY  
ASSESSMENT DISTRICT NO. 19-17-003-OROSI  
STORM DRAINAGE ASSESSMENT**

**ASSESSMENT BALLOT  
and  
Waiver of Public Meeting and Hearing Including Notice Thereof**

Property Owner: Self Help Enterprises  
Mailing Address: 8445 W. Elowin Court  
Visalia, CA 93291

Location of Parcels to be assessed: Tract Map TSM 17-003 located on the south side of  
Avenue 413 east of Road 124 in the community of Oroshi

Assessor's Parcel Numbers: See attached Schedule  
Assessment Amounts: See attached Schedule

Whereas, the Property Owner declares and acknowledges that it is the sole owner of all properties and parcels within Tulare County Subdivision Map No. TSM 17-003; and

Whereas, the Property Owner declares and acknowledges that, as the Owner of the parcels to be established upon the recordation of the Final Map for Tulare County Subdivision Map No. TSM 17-003, the Property Owner is entitled, pursuant to Article XIID, §4 of the California Constitution and Government Code Sections 53753 and 54954.6, to a public meeting and a public hearing, including mailed notice thereof, before the Tulare County Board of Supervisors establishes an assessment district and imposes annual assessments pursuant to the benefit Assessment Act of 1982, Government Code section 54700 et seq., for the purpose of recovering the County of Tulare's costs to maintain storm drainage improvements dedicated or deeded to the County of Tulare to serve all of the properties within such subdivision;

NOW, THEREFORE, THE PROPERTY OWNER declares as follows:

1. For its own purposes, good cause and consideration to the Property Owner and its successors-in-interest, the Property Owner hereby waives its rights and entitlements to the public meetings, public hearings and the notice therefore described above; and
2. The Property Owner requests that the Tulare County Board of Supervisors proceed, without further meeting or hearing, with the immediate formation of the proposed Tulare County Assessment District No. 19-17-003-OROSI and the imposition of to pay for the continuing cost of the maintenance of the storm drainage system and ponding lot as more fully described in the Tulare County Engineer's report on this matter filed with the Clerk of the Board of Supervisors on \_\_\_\_\_;
3. The Property Owner hereby waives its rights and the rights of any of its successors-in-interest to challenge, on any grounds now known or unknown or which may become known in the future, the formation of Tulare County Assessment District No. 19-17-003-OROSI, the imposition of the assessments as set out in the Engineer's Report filed on this matter with the

Clerk of the Board of Supervisors on \_\_\_\_\_, or any proceedings connected therewith and the Property Owner will advise any and all of its successors-in-interest of this waiver.

4. The Property Owner, pursuant to Article XIID, §4 of the California Constitution, hereby vote by ballot on the formation of the assessment district and the imposition of the assessment as follows (please check one):

**Yes**, I approve of and agree to the formation of Tulare County Assessment District No. 19-17-003-OROSI and the imposition of the annual assessments as set out in the schedules attached hereto on each of the above referenced parcels. I also approve of and agree to the imposition, for each fiscal year hereafter, of the following annual adjustment factor on the annual assessment: Adjustment in accordance with the Consumer Price Index [Urban Wage Earners and Clerical Workers for the Los Angeles-Anaheim-Riverside CSMA] or any successor index published by the United States Department of Labor, Bureau of Labor Statistics as set out in the Engineer's Report for this Assessment District filed with the Tulare County Clerk of the Board on \_\_\_\_\_.


**No**, I object to the formation of Tulare County Assessment District No. 19-17-003-OROSI and I do not approve of the imposition of an annual assessment with an annual adjustment factor.

5. The Property Owner hereby agree that this document may be recorded by the County of Tulare as a document effecting property interests in the properties and parcels established upon the recordation of the final map of Tulare County Subdivision Map No. TSM 17-003.

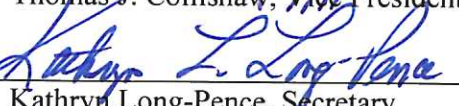
Under penalty of perjury, the undersigned declares that he is acting on behalf of the Property Owner first listed above, that he is authorized to make the statements, declarations, commitments and waivers set out above on behalf of the Property Owner and its successors-in-interest, and that such statements, declarations, commitments and waivers are true and correct.

Self Help Enterprises

Signature

  
Thomas J. Collishaw, Vice President

Signature

  
Kathryn Long-Pence, Secretary

(Please sign and then print under the signature the name of each owner of record or, in the case of a property owned by non-individual, the authorized representative of the property owner. In the case of authorized representative, please attach proof of authorization.)

**Return this Ballot to:**

Tulare County Board of Supervisors  
County Administration Building  
2800 West Burrel Avenue  
County Civic Center  
Visalia, CA 93291

STORM DRAINAGE ASSESSMENT DISTRICT NO. 19-17-003-OROSI  
 FISCAL YEAR 2019/2020  
 AND EACH FISCAL YEAR THEREAFTER AS ADJUSTED  
 BY THE FORMULA FOR INFLATION ADJUSTMENT  
 SET OUT IN THE ENGINEER'S REPORT

<u>Assessment Number*</u>	<u>Owners Name</u>	<u>Assessment (\$)</u>
1	SELF HELP ENTERPRISES	37.10
2	SELF HELP ENTERPRISES	37.10
3	SELF HELP ENTERPRISES	37.10
4	SELF HELP ENTERPRISES	37.10
5	SELF HELP ENTERPRISES	37.10
6	SELF HELP ENTERPRISES	37.10
7	SELF HELP ENTERPRISES	37.10
8	SELF HELP ENTERPRISES	37.10
9	SELF HELP ENTERPRISES	37.10
10	SELF HELP ENTERPRISES	37.10
11	SELF HELP ENTERPRISES	37.10
12	SELF HELP ENTERPRISES	37.10
13	SELF HELP ENTERPRISES	37.10
14	SELF HELP ENTERPRISES	37.10
15	SELF HELP ENTERPRISES	37.10
16	SELF HELP ENTERPRISES	37.10
17	SELF HELP ENTERPRISES	37.10
18	SELF HELP ENTERPRISES	37.10
19	SELF HELP ENTERPRISES	37.10
20	SELF HELP ENTERPRISES	37.10
21	SELF HELP ENTERPRISES	37.10
22	SELF HELP ENTERPRISES	37.10
23	SELF HELP ENTERPRISES	37.10
24	SELF HELP ENTERPRISES	37.10
25	SELF HELP ENTERPRISES	37.10
26	SELF HELP ENTERPRISES	37.10
27	SELF HELP ENTERPRISES	37.10
28	SELF HELP ENTERPRISES	37.10
29	SELF HELP ENTERPRISES	37.10
30	SELF HELP ENTERPRISES	37.10
31	SELF HELP ENTERPRISES	37.10
32	SELF HELP ENTERPRISES	37.10
33	SELF HELP ENTERPRISES	37.10
34	SELF HELP ENTERPRISES	37.10
35	SELF HELP ENTERPRISES	37.10
36	SELF HELP ENTERPRISES	37.10
37	SELF HELP ENTERPRISES	37.10

\* Assessment numbers shown correspond to lot numbers on the final map of Tract No. TSM 17-003. These numbers will be replaced with corresponding assessor's parcel numbers once issued after recordation of the final map.

# Attachment F

## Notice of Assessment

1  
2  
3  
4  
5  
6  
7  
8  
9  
10  
11  
12  
13  
14  
15  
16  
17  
18  
19  
20  
21  
22  
23  
24  
25  
26  
27  
28  
29  
30  
31  
32  
33  
34  
35  
36  
37  
38  
39  
40  
41  
42  
43  
44  
45

Recording Requested by  
And return to:  
Resource Management Agency  
Attention: Craig Anderson

NOTICE OF ASSESSMENT

Pursuant to the Benefit Assessment Act of 1982, Section 54700 et seq., of the Government Code, the undersigned Clerk of the Board of Supervisors of the County of Tulare, State of California, hereby gives notice that an assessment diagram and assessment were filed in the office of the Director of Transportation of the County of Tulare relating to the following described real property:

Assessment Diagram of Assessment District No. 19-17-003-OROSI, of the County of Tulare, State of California as recorded in Book \_\_\_\_\_ of \_\_\_\_\_ Maps of Assessment and Community Facilities Districts at Page \_\_\_\_\_, in the Office of the County Recorder of the County of Tulare, State of California.

Notice is further given that upon the recording of this notice in the Office of the County Recorder, the several assessments assessed on the lots, pieces, and parcels shown on the filed assessment diagram shall become a lien upon the lots or portions of lots assessed, respectively.

Reference is made to the assessment diagram and assessment roll filed in the Office of the Director of Transportation of Tulare County and entitled "Assessment Diagram", Assessment District No. 19-17-003-OROSI of the County of Tulare, State of California.

ATTEST: JASON T. BRITT  
County Administrative Officer/Clerk  
of the Board of Supervisors

By \_\_\_\_\_  
Deputy Clerk

Attachment G  
Agreement to Collect  
Assessments



1  
2  
3  
4 AGREEMENT

5 THE AGREEMENT, is made and entered into this \_\_\_\_\_ day of \_\_\_\_\_, 2019  
6 between the COUNTY OF TULARE, hereinafter referred to as COUNTY, and SELF HELP  
7 ENTERPRISES, hereinafter collectively referred to as OWNER/SUBDIVIDER, with reference to  
8 the following:

9 A. The COUNTY has conditionally approved the Vesting Tentative Map of  
10 Subdivision Tract No. TSM 17-003; and

11 B. The OWNER/SUBDIVIDER currently owns the property described as Subdivision  
12 Tract No. TSM 17-003; and

13 C. The COUNTY Board of Supervisors has directed, in Board Resolution No. 93-1375,  
14 that the COUNTY will accept no new drainage systems in any new land division or development  
15 unless the developer provides a mechanism to fund future maintenance activities; and  
16

17 D. Pursuant to COUNTY Ordinance Code Section 7-01-1375 et seq. and Condition No.  
18 25 established by COUNTY Planning Commission Resolution No. 9365, approving the Tentative  
19 Subdivision Map for Tract No. TSM 17-003, an assessment district is required to pay for the  
20 continuing cost of the maintenance of the storm drainage system and ponding lot dedicated by the  
21 Final Map of Subdivision Tract No. TSM 17-003 and the OWNER/SUBDIVIDER of Tract No.  
22 TSM 17-003 has filed an application for and consent to form such an assessment district; and  
23

24 E. The OWNER/SUBDIVIDER has consented to pay the continuing cost to maintain  
25 these storm drainage system improvements through an assessment district and the COUNTY  
26 Board of Supervisors has by Resolution No. \_\_\_\_\_ formed an assessment district known as  
27 Assessment District No. 19-17-003-OROSI of the County of Tulare, State of California for that  
28 purpose.  
29

30 ACCORDINGLY, IT IS AGREED:  
31

32 1. OWNER/SUBDIVIDER agrees to pay in full the assessments approved and levied  
33 by the COUNTY Board of Supervisors Resolution No. \_\_\_\_\_ upon first conveyance of each  
34 lot or parcel subject to such assessments or by June 30, 2021, whichever first occurs.  
35

36 2. To secure such payment of such assessments, the COUNTY has or will cause to be  
37 recorded a Notice of Assessment, imposing a lien for such assessments, and an assessment  
38 diagram to be filed in accordance with Streets and Highways Code Section 3114. Upon payment  
39 in full of each assessment, the COUNTY shall cause the County Treasurer to record pursuant to  
40 Streets and Highways Code Section 3114.3 an addendum to such Notice of Assessment stating  
41 that the assessment has been paid and the associated lien discharge as to that particular lot or  
42 parcel.  
43  
44

45 TULARE COUNTY AGREEMENT NO. \_\_\_\_\_  
46

1  
2 3. OWNER/SUBDIVIDER shall maintain complete and accurate records with respect  
3 to the conveyance of lots or parcels subject to the Agreement and with respect to the assessments  
4 due under this Agreement. All such records shall be prepared in accordance with generally  
5 accepted accounting procedures, shall be clearly identified, and shall be kept readily accessible.  
6 Upon request, OWNER/SUBDIVIDER shall make such records available to the COUNTY  
7 Auditor and to his agents and representatives within the COUNTY, for the purpose of auditing  
8 and/or copying such records, until final payment is made under this Agreement.  
9

10 4. Nothing in the Agreement shall be construed to constitute the  
11 OWNER/SUBDIVIDER or any of its agents, employees or officers as an agent, employee or  
12 officer of COUNTY.  
13

14 5. This Agreement represents the entire agreement between OWNER/SUBDIVIDER  
15 and COUNTY as to its subject matter and no prior oral or written understanding shall be of any  
16 force or effect. No part of this Agreement may be modified, waived or repealed without the  
17 written consent of both parties.  
18

19 6. Except as may be otherwise required by law, any notice to be given shall be written  
20 and shall be either personally delivered, sent by facsimile transmission or sent by first class mail,  
21 postage prepaid and addressed as follows:  
22

23  
24 COUNTY: Reed Schenke, Director  
25 Tulare County Resource Management Agency  
26 5961 S. Mooney Blvd.  
27 Visalia, Ca 93277  
28

29 (FAX No.: (559) 730-2653 / Confirming No.: (559) 624-7000)  
30

31  
32 OWNER/SUBDIVIDER: Self Help Enterprises  
33 8445 W. Elowin Court  
34 Visalia, CA 93291  
35

36 (Confirming No.: (559) 651-1000)  
37  
38

39 Notice delivered personally or sent by facsimile transmission is deemed to be received  
40 upon receipt. Notice sent by first class mail shall be deemed received on the fourth day after the  
41 date of mailing. Either party may change the above address or fax number by giving written  
42 notice pursuant to this paragraph.  
43

44 7. The Agreement is binding on all heirs, assigns and successors in interest. No  
45 assignment of this Agreement may be made without the express written consent of the COUNTY.  
46

1           8. This Agreement reflects the contributions of both parties and accordingly the  
2 provisions of Civil Code Section 1654 shall not apply to address and interpret any uncertainty.  
3

4           9. Unless specifically set forth, the parties to this Agreement do not intend to provide  
5 any other party with any benefit or enforceable legal or equitable right or remedy.  
6

7           10. This Agreement shall be interpreted and governed under the laws of the State of  
8 California without reference to California conflict of law principles. Any litigation arising out of  
9 this Agreement shall be brought in Tulare County California. OWNER/SUBDIVIDER waives the  
10 removal provisions of California Code of Civil Procedure Section 394.  
11

12           11. The failure of either party to insist on strict compliance with any provision of this  
13 Agreement shall not be considered a waiver of any right to do so, whether for that breach or any  
14 subsequent breach. The acceptance by either party of either performance or payment shall not be  
15 considered to be a waiver of any preceding breach of the Agreement by the other party.  
16

17           12. The recitals to this Agreement are fully incorporated into and are integral parts of  
18 this Agreement.  
19

20           13. This Agreement is subject to all applicable laws and regulations. If any provision  
21 of the Agreement is found by any court or other legal authority, or is agreed by the parties, to be in  
22 conflict with any code or regulation governing its subject, the conflicting provision shall be  
23 considered null and void. If the effect of nullifying and conflicting provision is such that a  
24 material benefit of the Agreement to the COUNTY is lost, the parties shall comply with paragraph  
25 No. 14 below to ensure payment in full to the COUNTY by the OWNER/SUBDIVIDER of the  
26 subject assessments. If all other cases the remainder of the Agreement shall continue in full force  
27 and effect.  
28

29           14. Each party agrees to execute any additional documents and to perform any further  
30 acts which may be reasonably required to affect the purposes of this Agreement.  
31

32           15. Unless otherwise provided in the Agreement, no part of this Agreement may be  
33 assigned or subcontracted by OWNER/SUBDIVIDER without the prior written consent of  
34 COUNTY.  
35

36           16. This Agreement shall become effective upon execution of both parties hereto and  
37 shall terminate upon issuance by COUNTY of a receipt for payment in full of the assessments  
38 imposed by COUNTY Board of Supervisors Resolution No. \_\_\_\_\_.

39 /  
40 /  
41 /  
42 /  
43 /  
44 /  
45 /  
46 /

1  
2  
3  
4  
5  
6  
7  
8  
9  
10  
11  
12  
13  
14  
15  
16  
17  
18  
19  
20  
21  
22  
23  
24  
25  
26  
27  
28  
29  
30  
31  
32  
33  
34  
35  
36  
37  
38  
39  
40  
41  
42  
43  
44  
45

THE PARTIES, having read and considered the above provision, indicate their agreement by their authorized signatures below.

COUNTY OF TULARE

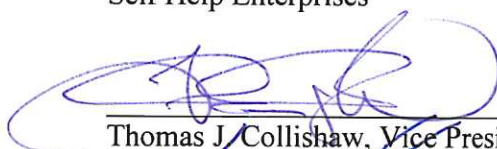
By \_\_\_\_\_  
Chairman, Board of Supervisors

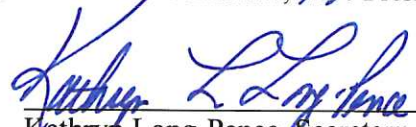
“County”

ATTEST: JASON T. BRITT  
County Administrative Officer/Clerk  
of the Board of Supervisors

By \_\_\_\_\_  
Deputy

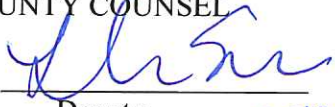
Self Help Enterprises

  
Thomas J. Collishaw, Vice President

  
Kathryn Long-Pence, Secretary

“Owner/Subdivider”

APPROVED AS TO FORM:  
COUNTY COUNSEL

By   
Deputy 20191953

Attachment H  
Form AUD 308

# County of Tulare — Auditor Controller

## Budget Adjustment Form

11:40 AM

12/23/19							6/20		2020	
Date				Document ID Number			Accounting Period		Budget Fiscal Year	
Agency Name							Contact Person	Phone	Extension	
Action** A,C,D	Fund	Dept	Appr #				<u>LEVEL 1 Finish Here</u>	Current Amount	Revised Amount	Inc / Dec Amt
A	L93	L93	L93SSUP						772	772
A	L93	L93	L93INTRA						600	600
										-
										-
										-
										-
										-
										-
<b>Appropriations Total</b>							<i>Need Not Equal Zero</i>	-	1,372	1,372
Action** A,C,D	Fund	Dept	Appr #	Unit	Object	Rev	<u>LEVEL 2 Start Here</u>	Current Amt	Revised Amount	Inc / Dec Amt
A	L93	L93	L93SSUP	2000	7066				772	772
A	L93	L93	L93INTRA	2000	9306				200	200
A	L93	L93	L93INTRA	2000	9316				200	200
A	L93	L93	L93INTRA	2000	9327				200	200
A	L93	L93		2000		5401			1,372	(1,372)
										-
										-
										-
										-
										-
										-
										-
										-
										-
										-
										-
<b>Line Total</b>							<i>Must Equal Zero</i>	\$ -	\$ 2,744	\$ -
Reason for Adjustment (To Avoid Correspondence, State Reason in Detail)										
<div style="display: flex; justify-content: space-between;"> <div style="width: 45%;"> <p style="margin-top: 5px;">Affected Dept Head Signature</p> </div> <div style="width: 45%;"> <p style="margin-bottom: 5px;">New fund setup for Assessment District No. 19-17-003 Orosi (Strom Drainage L93)</p> <p style="margin-top: 5px;">Other Affected Dept Head Signature</p> </div> </div>										
Checked By: _____							Entered By: _____			
County Executive Office Action: No. _____ Date: _____							Date: _____			
( ) Approved ( ) Disapproved							Distribution: 1: BOS/CAO/Auditor			
By: _____										
Board of Supervisors Action: No. _____ Date: _____										
<b>** Action Codes: A=Add, C=Change, D=Deactivate</b>										
* Whenever a 93XX account budget is adjusted, a corresponding 94XX account budget must be adjusted in the billing agency, except for ISFs										
* Whenever a 95XX account budget is adjusted, a corresponding 96XX account budget must be adjusted in the billing agency, and vice versa										
* Whenever a 97XX account budget is adjusted, a corresponding 98XX account budget must be adjusted in the billing agency, and vice versa										