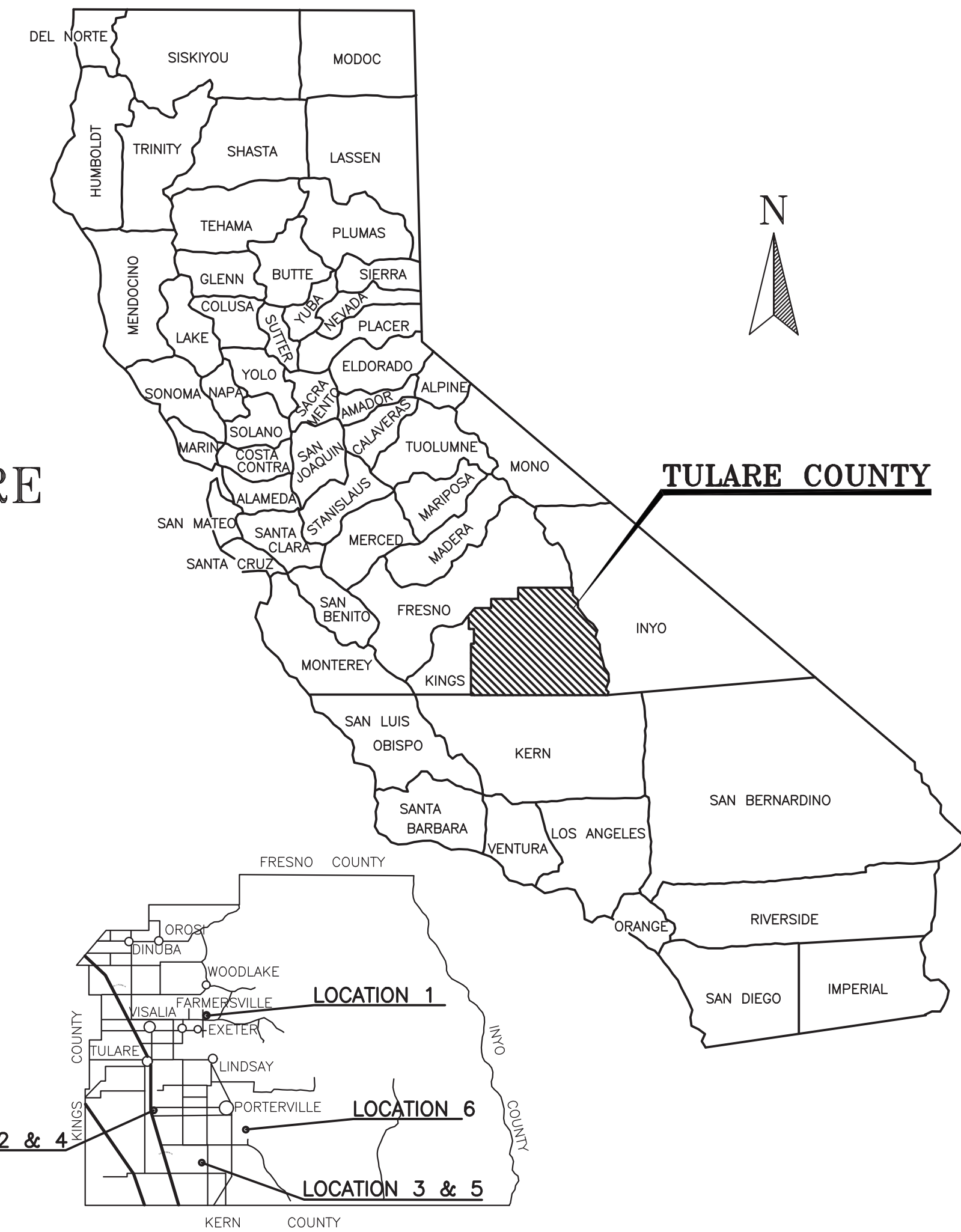


STATE OF CALIFORNIA
COUNTY OF TULARE

PROJECT PLANS FOR CONSTRUCTION OF
FARM 2 MARKET ROUTES
2.0 PROJECT 1
2006 HALF-CENT TRANSPORTATION SALES TAX MEASURE
(MEASURE R)

TO BE SUPPLEMENTED BY STANDARD PLANS AND STANDARD SPECIFICATIONS OF
THE STATE OF CALIFORNIA DEPARTMENT OF TRANSPORTATION DATED 2018



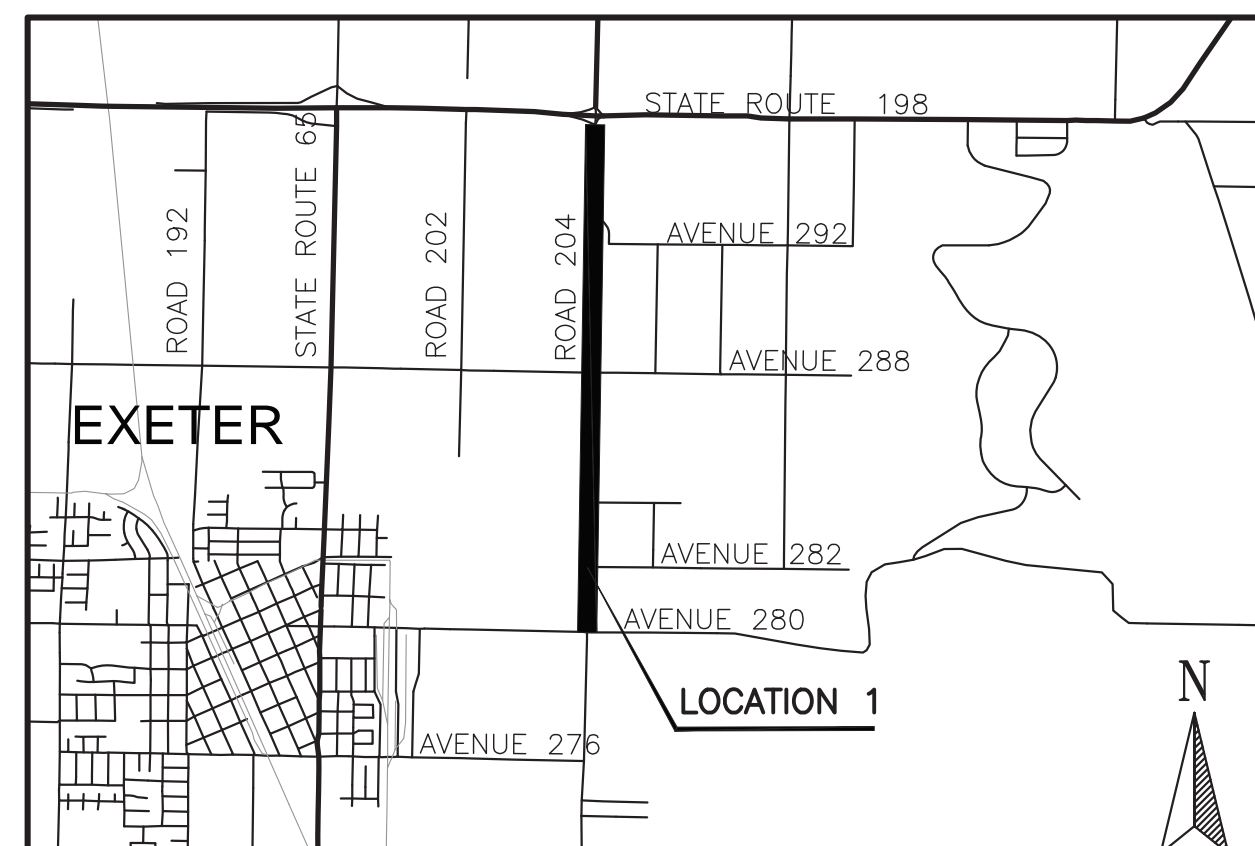
LOCATION MAP

PAGE	SHEET NO.	DESCRIPTION
1	T1	TITLE SHEET
2-3	C1-C2	CONSTRUCTION DETAILS
4	X1	LOCATION 1: TYPICAL CROSS SECTIONS
5-6	L1-L2	LOCATION 1: PLAN SHEETS
7-8	PD1-PD2	LOCATION 1: SIGNING AND STRIPING TABLE
9	CAS1	LOCATION 1: CONSTRUCTION AREA SIGN PLAN
10	CTP1	LOCATION 1: TRAFFIC CONTROL & DETOUR PLAN
11	X2	LOCATION 2: TYPICAL CROSS SECTIONS
12-14	L3-L5	LOCATION 2: PLAN SHEETS
15	PD3	LOCATION 2: SIGNING AND STRIPING TABLE
16	CAS2	LOCATION 2: CONSTRUCTION AREA SIGN PLAN
17	X3	LOCATION 3: TYPICAL CROSS SECTIONS
18-20	L6-L8	LOCATION 3: PLAN SHEETS
21	PD4	LOCATION 3: SIGNING AND STRIPING TABLE
22	CAS3	LOCATION 3: CONSTRUCTION AREA SIGN PLAN
23	L9	LOCATION 4: PLAN SHEET
24	CAS4	LOCATION 4: CONSTRUCTION AREA SIGN PLAN
25	L10	LOCATION 5: PLAN SHEET
26	CAS5	LOCATION 5: CONSTRUCTION AREA SIGN PLAN
27	L11	LOCATION 6: 1: PLAN SHEET
28	CAS6	LOCATION 6: CONSTRUCTION AREA SIGN PLAN

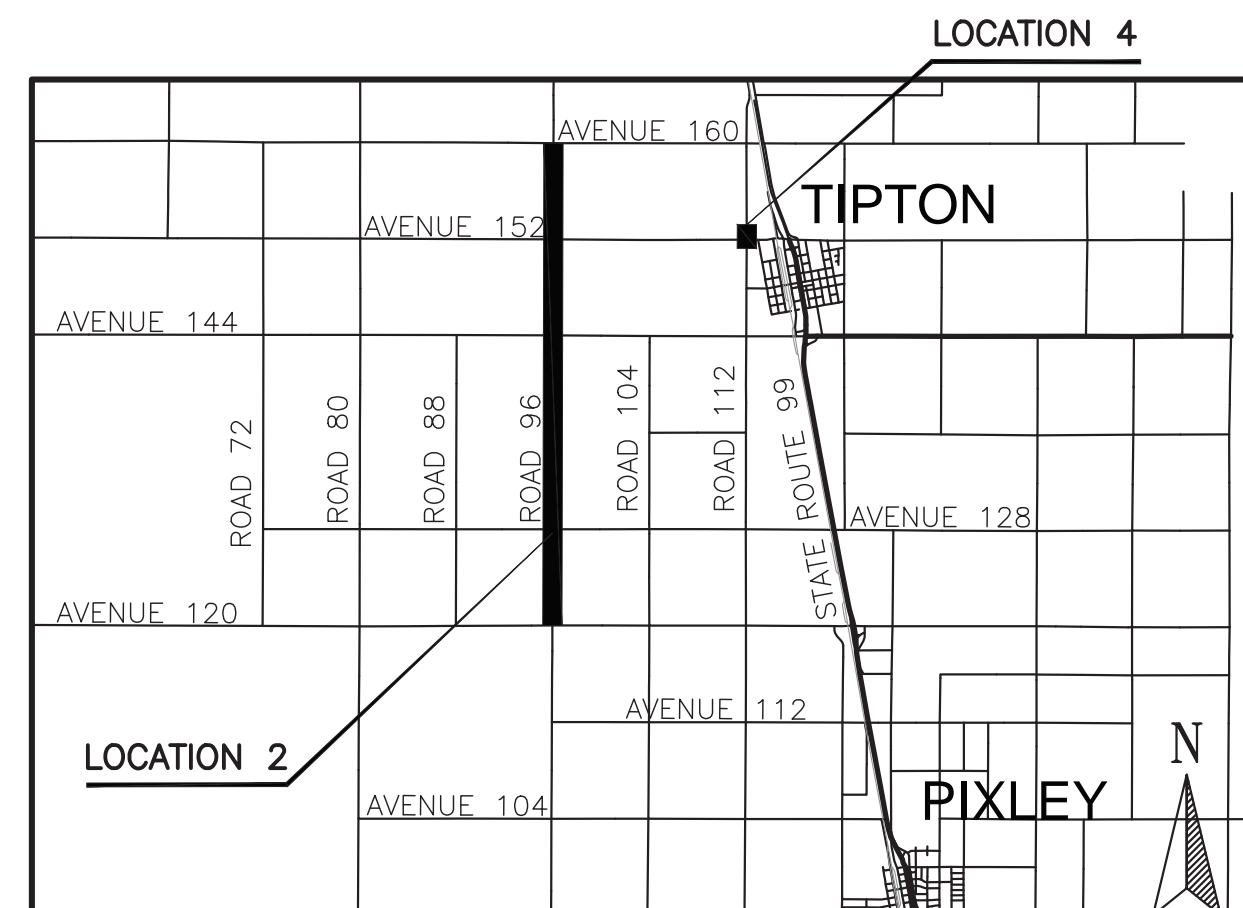
ABBREVIATIONS

AB	AGGREGATE BASE
AC	ASPHALT CONCRETE
AP	ANGLE POINT
AVE	AVENUE
CL, C	CENTER LINE
CONC	CONCRETE
CONST	CONSTRUCTION
DIA	DIAMETER
DR	DRIVE
DWY	DRIVEWAY
EG	EXISTING GROUND
EP	EDGE OF PAVEMENT
EXIST	EXISTING
FL	FLOW LINE
HMA	HOT MIX ASPHALT
LOL	LAYOUT LINE
LT	LEFT
MAX	MAXIMUM
MIN	MINIMUM
PE	PROFESSIONAL ENGINEER
PROP	PROPOSED
R	RADIUS
RD	ROAD
RE	RESIDENT ENGINEER
R/W	RIGHT OF WAY
RT	RIGHT
STA	STATION
STD	STANDARD

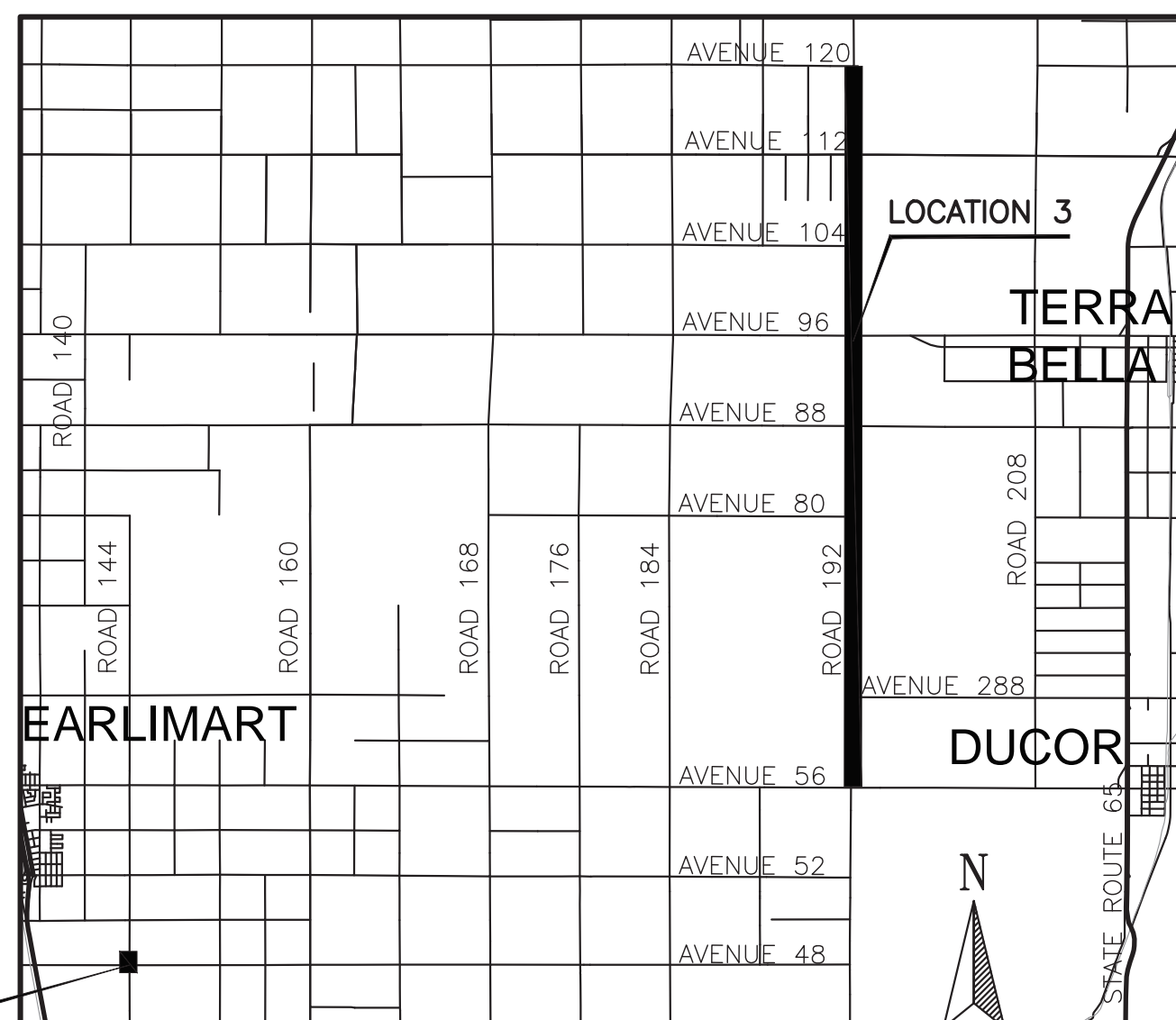
VICINITY MAP
LOCATION 1



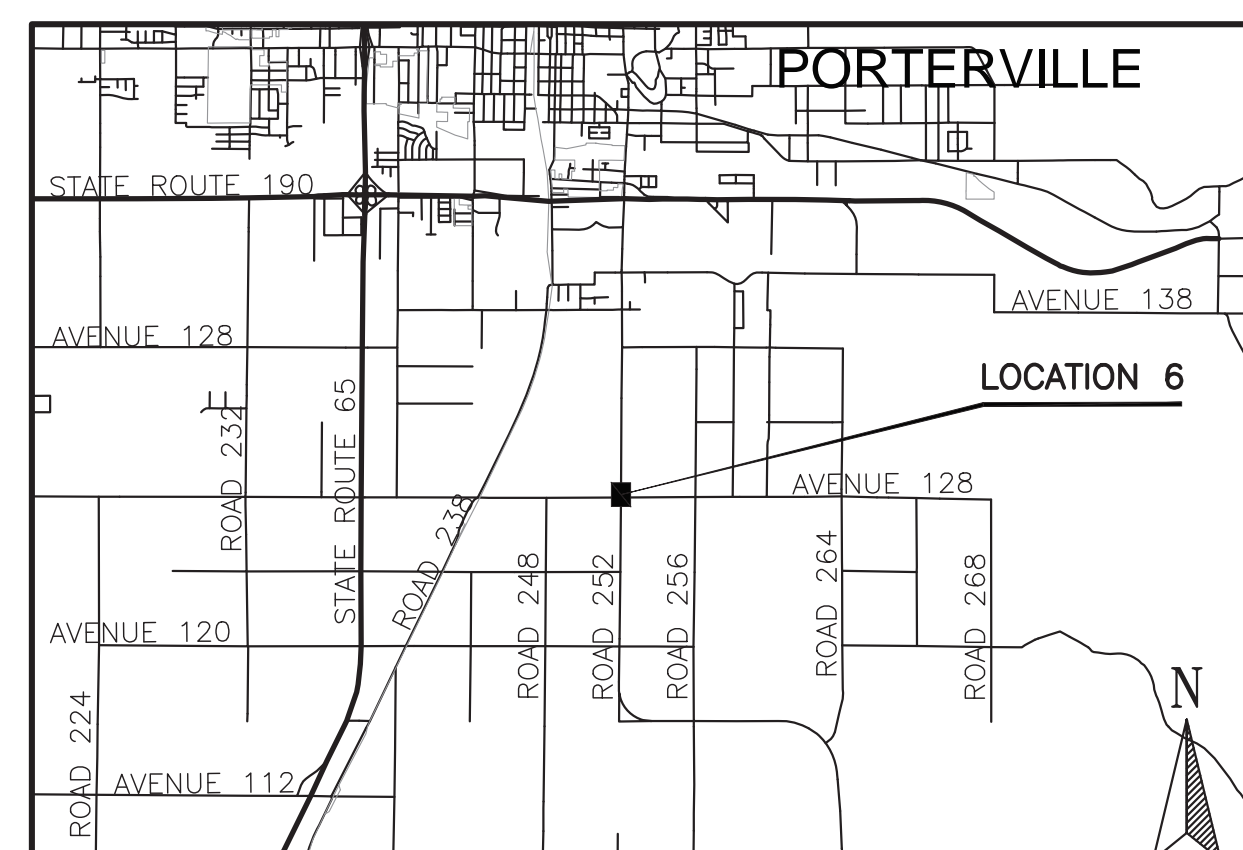
VICINITY MAP
LOCATION 2 & 4



VICINITY MAP
LOCATION 3 & 5



VICINITY MAP
LOCATION 6



APPROVED BY: _____ DATE: _____

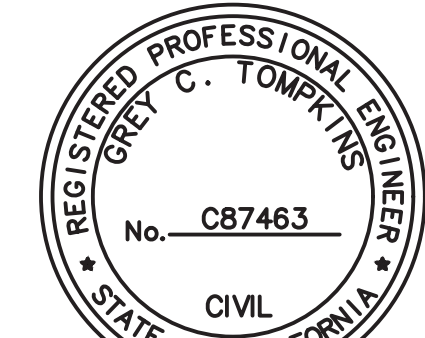
PETE VANDER POEL III, CHAIR
COUNTY OF TULARE BOARD OF SUPERVISORS

APPROVED BY: *R/S* DATE: 4/22/2020

REED SCHENKE, P.E., DIRECTOR
COUNTY OF TULARE RESOURCE MANAGEMENT AGENCY

SIGNED BY: *Grey Tompkins* DATE: 04/22/2020

GREY TOMPKINS, P.E., PROJECT MANAGER
COUNTY OF TULARE RESOURCE MANAGEMENT AGENCY



NO.	REVISIONS	DATE	BY

COUNTY OF TULARE
RESOURCE MANAGEMENT AGENCY
5961 SOUTH MOONEY BLVD.
VISALIA, CA 93277
(559)624-7000
WWW.TULARECOUNTY.CA.GOV/RMA



TITLE SHEET
FARM 2 MARKET ROUTES 2.0
PROJECT 1
TULARE COUNTY

SCALE	NTS
DIVISION	DESIGN
JOB NO.	19017-1
DESIGNED	GL
DRAWN	GL
CHECKED	GT
FILE	19017-1T001.DWG
DATE	05/05/2020
SHEET No.	T1

1 OF 28



Know what's below.
Call before you dig.
Contractor shall call
Underground Service Alert at
811 two working days prior
to excavation