



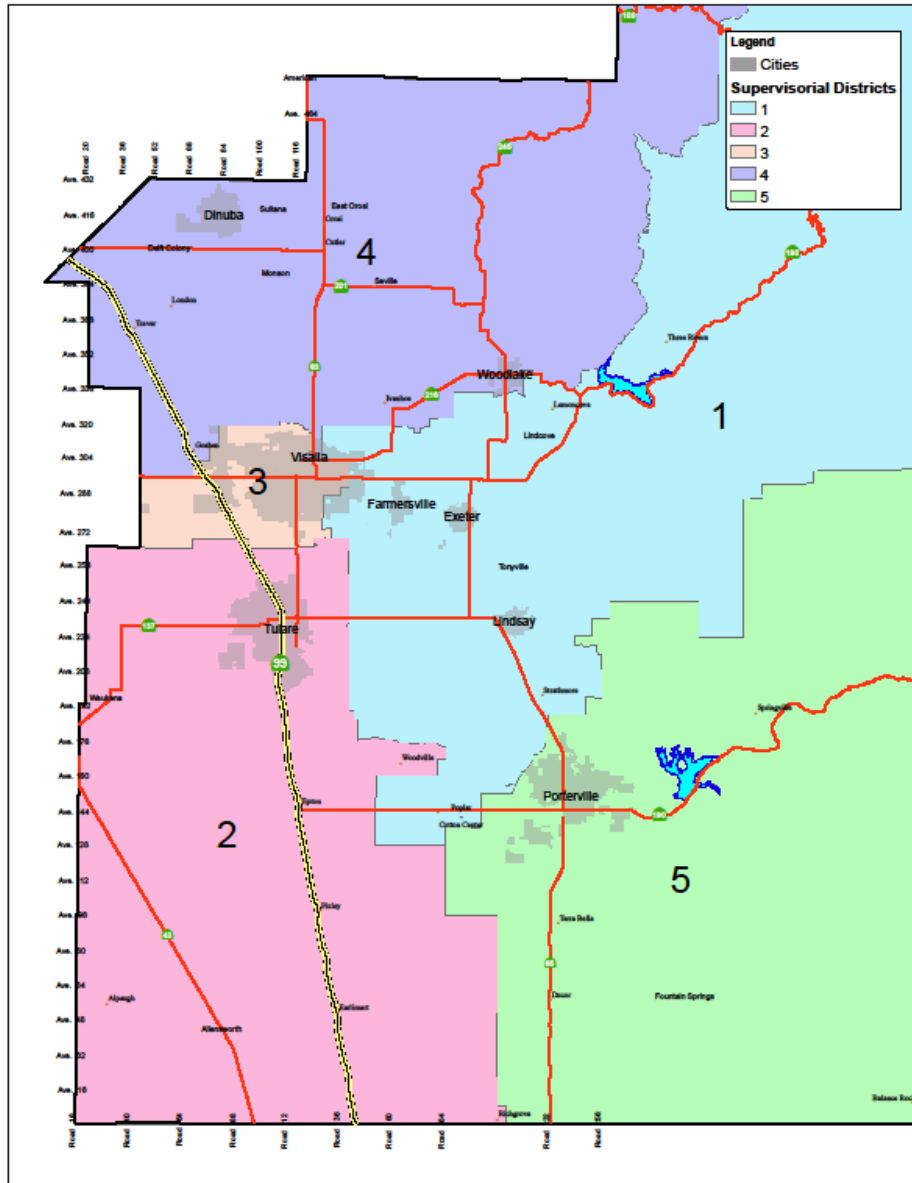
# REDISTRICTING 2021

MAY 12, 2020

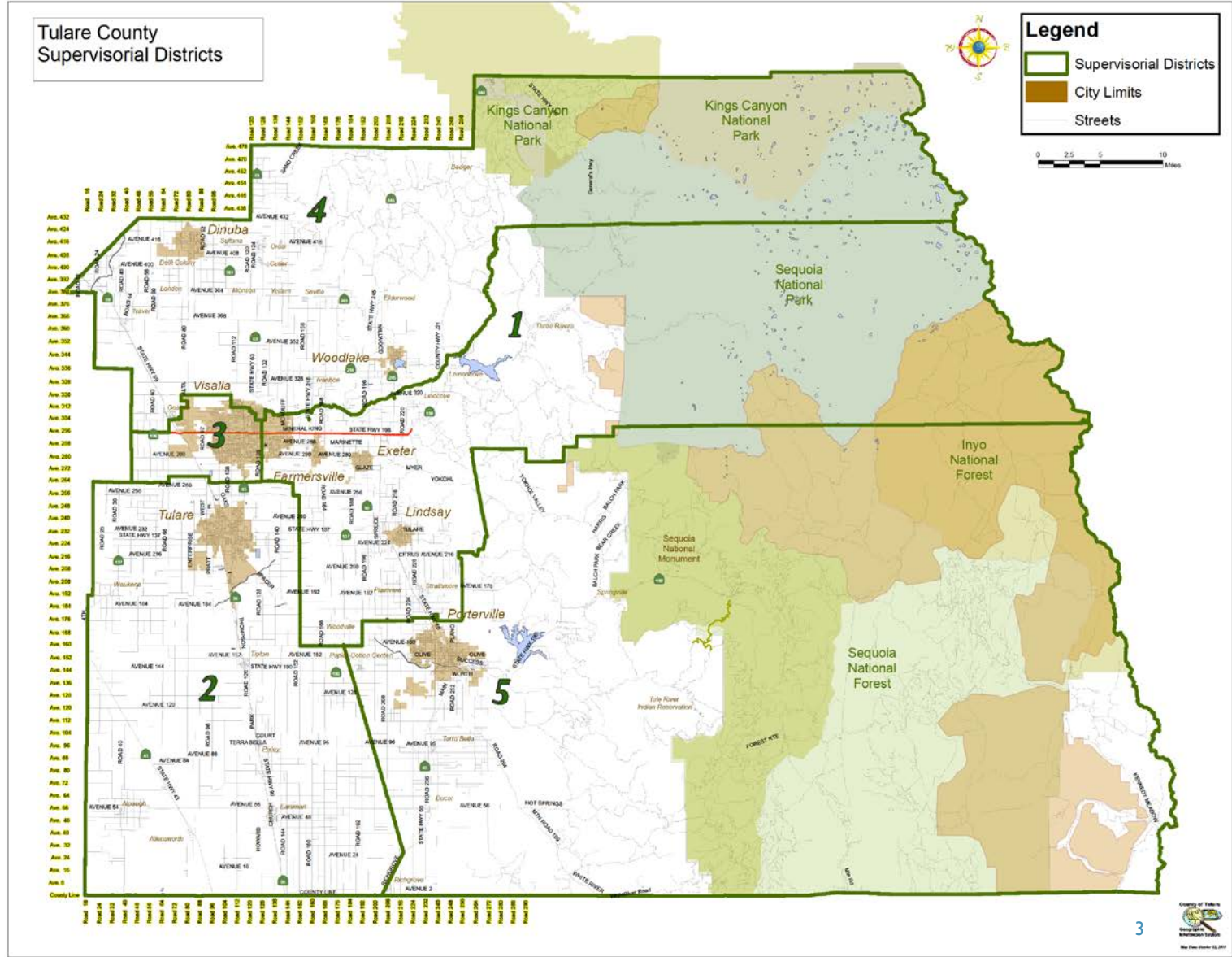


# KEY POINTS

- Counties are required to re-draw Supervisorial District boundaries every 10 years
  - Incorporate information collected from the 10-year Census
- Population must be equally distributed among districts
  - Deviations less than 10% are acceptable, and representative of communities of interest
- Extensive statutory reforms were adopted in 2019 through the California Fair Maps Act
  - Included: Outreach, public hearings, and recordkeeping requirements
- Counties may establish an Advisory Redistricting Commission and utilize outside consultants to assist with the redistricting process
- Staff anticipates adoption of new district boundaries on August 3, 2021
  - Possible delays due to the receipt of 2020 US Census information



2001



2011

# CHANGES SINCE 2011

## **Statutory and Legal Considerations for drawing new lines, in order of priority:**

1. Population equality shall be based on the total population of residents of the County as determined by the census. State prisoners whose last known place of residence was in Tulare County as determined by the California Department of Corrections and Rehabilitation, shall be added to the Tulare County population.
2. Supervisorial district boundaries shall comply with the U.S. Constitution, California Constitution, and the federal Voting Rights Act.
3. Districts shall be geographically contiguous.
4. Districts shall respect the geographic integrity of any local neighborhood or local community of interest in a manner that minimizes its division.

# CHANGES SINCE 2011

## **Statutory and Legal Considerations for drawing new lines, in order of priority (continued):**

5. Districts shall respect the geographic integrity of a city or census designated place in a manner that minimizes its division
6. District boundaries should be easily identifiable and understandable by residents, such as along natural and artificial barriers, along streets, or along boundaries of the county.
7. Districts shall be drawn to encourage geographic compactness in such a manner that nearby areas of population are not bypassed in favor of more distant populations.
8. The board shall not adopt boundaries for the purpose of favoring or discriminating against a political party.

# CHANGES SINCE 2011

## ■ **Hearings**

- 4 Public Hearings: one before draft maps are drawn, two after draft maps are drawn (one on weekend or evening), and one for adoption.

## ■ **Public Outreach**

- Outreach to media and good government, civil rights, civic engagement, and community groups
- Other measures: live translation, published notices, publish draft map before adoption, publish demographic information, receipt of maps or testimony from the public in writing or electronically

## ■ **Recordkeeping**

- Record of each public comment and Board deliberations at every public hearing or workshop, made available to the public within two weeks
- Website maintained for 10 years in multiple languages to include:
  - Explanation of redistricting process, calendar of all hearings and workshops, notice and agenda for each hearing and workshop, recording or written summary of each hearing and workshop, procedures for testifying or submitting written testimony
  - All draft maps and adopted map

# OTHER BOUNDARY CONSIDERATIONS

## **Local Considerations utilized in 2011 (all are acceptable in 2021)**

1. Consideration of topography and geography;
2. Cohesion, contiguousness, integrity, and compactness of territory;
3. Cohesion of communities of interest;
4. Avoid dividing incorporated cities where possible;
5. Protect integrity of rural towns and communities;
6. Avoid dividing urban growth areas where possible;
7. Facilitate access of constituents to their Supervisor; and
8. Avoid splitting election precincts where possible.

# OTHER BOUNDARY CONSIDERATIONS

## **Other considerations for drawing new lines**

1. Consideration of incumbency now restricted
2. Mid-decade redistricting is now only permitted under specific circumstances



# COMMISSION

## Three Commission Options

1. **Advisory Redistricting Commission (ARC).** Commission recommends boundaries to the Board and the Board can make modifications to the recommended boundaries prior to adoption. Utilized by the Board in 2011. (Staff recommends utilizing this Commission)
2. **Independent Redistricting Commission (IRC).** Commission adopts new boundaries without returning to the Board for approval. Not appointed directly by the Board.
3. **Hybrid Redistricting Commission (HRC).** Commission recommends two or more maps to the Board, one of which must be adopted without modification. Not appointed directly by the Board.
  - Options 2 & 3 have extensive eligibility requirements and restrictions on membership/post-member activities

# COMMISSION

## Appointment Process

- The Board has discretion over the manner in which members are appointed to an Advisory Redistricting Commission
- The only restriction on eligibility for the committee is:
  - A person who is an elected official of the local jurisdiction, or a family member, staff member, or paid campaign staff of an elected official of the local jurisdiction, shall not be appointed to serve on the commission.
- By laws will be required. Based on today's feedback, staff will prepare those and return for approval at the time of initiating the appointment process
- If an outreach consultant is utilized, staff recommends using that consultant to assist in the search for applicants

# COMMISSION

## **2011 Process** (Same format is acceptable for 2021)

Commission consisted of 11 members

1. 5 members selected by each individual Supervisor from applicants within their district
2. 5 members selected through random drawing from applicants within their district during a Board meeting
3. 1 at-large selected through random drawing during a Board meeting

Board gave the Commission a calendar and charged it with coming up with final recommended maps by the deadline set. Otherwise the Board gave the committee complete discretion over the process.

# COMMISSION

## **2011 Process** (Same format is acceptable for 2021), continued:

1. Commission held public outreach meetings (English/Spanish)
  - a. One in each supervisorial district, most on weekday evenings
2. Commission presented a final report to the Board
  - a. Three final maps without recommending one over another
  - b. Board selected one, made slight modifications to it, and adopted it as ordinance

# CONSULTANTS

**Staff recommends utilizing several outside consultants to assist the redistricting process:**

- 1. Outside Counsel.** Supplement internal legal services, recommend the same firm Nielsen Merksamer (same as 2011). This firm is familiar with redistricting throughout California, including current case law affecting new district maps.
- 2. Outreach & Language Consultant.** Outreach to language minority communities. It is recommended that the County utilize the same consultant as 2011.

# CONSULTANTS

**Staff recommends utilizing several outside consultants to assist the redistricting process:**

- 3. GIS & Cartography.** Utilize in-house GIS services and that outside counsel verify the data through a neutral third-party demographer.
- 4. Website.** New to 2021, the County will be required to establish and maintain a redistricting website for at least 10 years after the adoption of new district boundaries. It is recommended that this process begin as soon as possible with TCiCT.

# PROPOSED TIMELINE

Description	Date
2020 Census Begins	April 1, 2020
Board selects preferred Commission type	May 5, 2020
Board creates Commission, adopts by-laws, and initiates recruitment of members	June 9, 2020
Board appoints Commission members	September 1, 2020
<b>2020 Census information received for State and local redistricting</b>	<b>April 1, 2021 (subject to possible delay)</b>
Commission holds required public hearings	April – June 2021
Board considers draft maps and provides comments	June & July 2021
<b>Board adopts final map</b>	<b>August 3, 2021</b>
Primary election	March 8, 2020

# REQUESTED ACTIONS

1. Provide direction to staff as to which, if any, of the three proposed options staff should pursue with regard to establishing a Supervisorial Redistricting Commission:
  - a. Approve the creation of a 2021 Advisory Redistricting Commission to recommend boundary changes for supervisorial districts to the Board for possible modification and adoption.
  - b. Approve the creation of 2021 Hybrid Redistricting Commission to recommend supervisorial district boundary changes to the Board for adoption without modification.
  - c. Approve the creation of a 2021 Independent Redistricting Commission to adopt supervisorial district boundary changes on behalf of the Board.
2. Provide direction to staff regarding the use of outside consultants in the redistricting process